

KDU 57

Bracket support, 57x30 mm

The bracket holder KDU 57 with welded-on top plate (material thickness t) is easy to use as a construction profile due to its continuous, three-sided perforation. It consists of a U profile 57 x 30 mm. A support piece must be used if the bracket is 400 mm long or if the bracket is being mounted in the end zone of the ceiling strut. If no support piece is used, the permissible loads must be reduced by 30%. We provide components in various materials and surface finishes to ensure that the corrosion requirements are met for all sorts of applications. FD/P: Factor for calculating the dowel load FD with actual console load P. The permissible loads are achieved using a support piece.

steel, galvanic zinc plated

Products	L	B _p	H _p	t	W
KDU 57-02GV	200 mm	57 mm	30 mm	5,00 mm	0,550 kg
KDU 57-03GV	300 mm	57 mm	30 mm	5,00 mm	0,720 kg
KDU 57-04GV	400 mm	57 mm	30 mm	5,00 mm	0,890 kg
KDU 57-05GV	500 mm	57 mm	30 mm	5,00 mm	1,060 kg
KDU 57-06GV	600 mm	57 mm	30 mm	5,00 mm	1,220 kg
KDU 57-07GV	700 mm	57 mm	30 mm	5,00 mm	1,390 kg
KDU 57-08GV	800 mm	57 mm	30 mm	5,00 mm	1,570 kg
KDU 57-09GV	900 mm	57 mm	30 mm	5,00 mm	1,740 kg
KDU 57-10GV	1000 mm	57 mm	30 mm	5,00 mm	1,910 kg
KDU 57-11GV	1100 mm	57 mm	30 mm	5,00 mm	2,070 kg
KDU 57-12GV	1200 mm	57 mm	30 mm	5,00 mm	2,250 kg
KDU 57-13GV	1300 mm	57 mm	30 mm	5,00 mm	2,410 kg
KDU 57-14GV	1400 mm	57 mm	30 mm	5,00 mm	2,590 kg
KDU 57-15GV	1500 mm	57 mm	30 mm	5,00 mm	2,760 kg

steel, batch/hot-dip galvanized

Products	L	B _p	H _p	t	W
KDU 57-02F	200 mm	57 mm	30 mm	5,00 mm	0,590 kg
KDU 57-03F	300 mm	57 mm	30 mm	5,00 mm	0,770 kg



PohlCon GmbH
 Nobelstraße 51 | 12057 Berlin
 Telefon: +49 30 68283-04 | Fax: +49 30 68283-383 | contact@pohlcon.com



PRODUCT INFORMATION

Products	L	B _p	H _p	t	W
KDU 57-04F	400 mm	57 mm	30 mm	5,00 mm	0,950 kg
KDU 57-05F	500 mm	57 mm	30 mm	5,00 mm	1,130 kg
KDU 57-06F	600 mm	57 mm	30 mm	5,00 mm	1,310 kg
KDU 57-07F	700 mm	57 mm	30 mm	5,00 mm	1,490 kg
KDU 57-08F	800 mm	57 mm	30 mm	5,00 mm	1,680 kg
KDU 57-09F	900 mm	57 mm	30 mm	5,00 mm	1,860 kg
KDU 57-10F	1000 mm	57 mm	30 mm	5,00 mm	2,040 kg
KDU 57-11F	1100 mm	57 mm	30 mm	5,00 mm	2,220 kg
KDU 57-12F	1200 mm	57 mm	30 mm	5,00 mm	2,400 kg
KDU 57-13F	1300 mm	57 mm	30 mm	5,00 mm	2,580 kg
KDU 57-14F	1400 mm	57 mm	30 mm	5,00 mm	2,770 kg
KDU 57-15F	1500 mm	57 mm	30 mm	5,00 mm	2,950 kg

Stainless steel, according to ASTM 304 / BS 304 S 3

Products	L	B _p	H _p	t	W
KDU 57-02E	200 mm	57 mm	30 mm	5,00 mm	0,570 kg
KDU 57-03E	300 mm	57 mm	30 mm	5,00 mm	0,740 kg
KDU 57-04E	400 mm	57 mm	30 mm	5,00 mm	0,910 kg
KDU 57-05E	500 mm	57 mm	30 mm	5,00 mm	1,080 kg
KDU 57-06E	600 mm	57 mm	30 mm	5,00 mm	1,250 kg
KDU 57-07E	700 mm	57 mm	30 mm	5,00 mm	1,420 kg
KDU 57-08E	800 mm	57 mm	30 mm	5,00 mm	1,590 kg
KDU 57-09E	900 mm	57 mm	30 mm	5,00 mm	1,760 kg
KDU 57-10E	1000 mm	57 mm	30 mm	5,00 mm	1,930 kg
KDU 57-11E	1100 mm	57 mm	30 mm	5,00 mm	2,100 kg
KDU 57-12E	1200 mm	57 mm	30 mm	5,00 mm	2,270 kg
KDU 57-13E	1300 mm	57 mm	30 mm	5,00 mm	2,440 kg
KDU 57-14E	1400 mm	57 mm	30 mm	5,00 mm	2,610 kg
KDU 57-15E	1500 mm	57 mm	30 mm	5,00 mm	2,780 kg



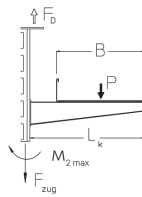
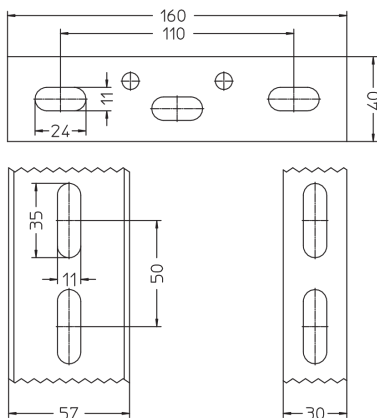
PRODUCT INFORMATION

Stainless steel, according to ASTM 316 Ti / AISI 316 L, BS 320S17 / BS 316S11

Products	L	B _p	H _p	t	W
KDU 57-02E4	200 mm	57 mm	30 mm	5,00 mm	0,570 kg
KDU 57-03E4	300 mm	57 mm	30 mm	5,00 mm	0,740 kg
KDU 57-04E4	400 mm	57 mm	30 mm	5,00 mm	0,910 kg
KDU 57-05E4	500 mm	57 mm	30 mm	5,00 mm	1,080 kg
KDU 57-06E4	600 mm	57 mm	30 mm	5,00 mm	1,250 kg
KDU 57-07E4	700 mm	57 mm	30 mm	5,00 mm	1,420 kg
KDU 57-08E4	800 mm	57 mm	30 mm	5,00 mm	1,590 kg
KDU 57-09E4	900 mm	57 mm	30 mm	5,00 mm	1,760 kg
KDU 57-10E4	1000 mm	57 mm	30 mm	5,00 mm	1,930 kg
KDU 57-11E4	1100 mm	57 mm	30 mm	5,00 mm	2,100 kg
KDU 57-12E4	1200 mm	57 mm	30 mm	5,00 mm	2,270 kg
KDU 57-13E4	1300 mm	57 mm	30 mm	5,00 mm	2,440 kg
KDU 57-14E4	1400 mm	57 mm	30 mm	5,00 mm	2,610 kg
KDU 57-15E4	1500 mm	57 mm	30 mm	5,00 mm	2,780 kg

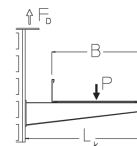
L: length
 B_p: profile width
 H_p: profile height
 t: material thickness
 W: Weight per storage unit

DETAIL AND APPLICATION IMAGES



$M_{2,max} = 670 \text{ Nm}$
 $F_{zug} = 15 \text{ kN}$

B	L _k	P _{max}	F _D /P
mm	mm	kN	
100	120	6,9	1,4
200	220	4,5	1,9
300	320	3,4	2,3
400	420	2,7	2,8
500	520	2,2	3,2
600	620	1,9	3,7

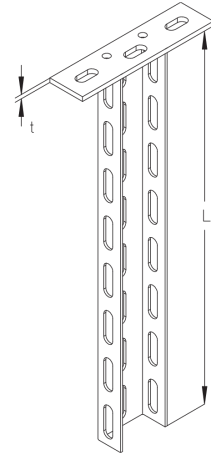
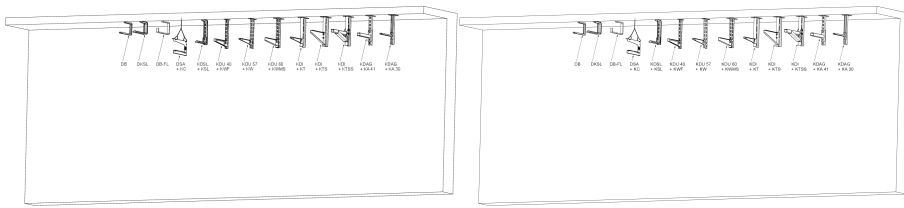


B	L _k	P _{max}	F _D /P
mm	mm	kN	
100	120	6,9	1,4
200	220	4,5	1,9
300	320	3,4	2,3

Page 3



PRODUCT INFORMATION



OPTIONAL ACCESSORIES

KWF, KW, KWMS, KHU 57, KHUV 57, KHUSS 57, SU 57, SD, SAZ

