

## KDI

Bracket support, heavy, 80x42 mm

The bracket holder KDI with welded-on top plate (material thickness  $t$ ) consists of an I profile 80 x 42 mm with continuous slots in the rail. Various surfaces ensure that the corrosion requirements of a wide variety of applications are met.  $FD/P$ : factor for calculating the dowel load  $FD$  with the actual bracket load  $P$  or the sum of the actual bracket loads.

steel, galvanic zinc plated

Products	L	H <sub>p</sub>	B <sub>p</sub>	t	W
KDI 02GV	200 mm	42 mm	80 mm	6,00 mm	1,722 kg
KDI 03GV	300 mm	42 mm	80 mm	6,00 mm	2,204 kg
KDI 04GV	400 mm	42 mm	80 mm	6,00 mm	2,704 kg
KDI 05GV	500 mm	42 mm	80 mm	6,00 mm	3,410 kg
KDI 06GV	600 mm	42 mm	80 mm	6,00 mm	3,900 kg
KDI 07GV	700 mm	42 mm	80 mm	6,00 mm	4,390 kg
KDI 08GV	800 mm	42 mm	80 mm	6,00 mm	5,020 kg
KDI 09GV	900 mm	42 mm	80 mm	6,00 mm	5,460 kg
KDI 10GV	1000 mm	42 mm	80 mm	6,00 mm	6,170 kg
KDI 11GV	1100 mm	42 mm	80 mm	8,00 mm	6,640 kg
KDI 12GV	1200 mm	42 mm	80 mm	8,00 mm	7,180 kg
KDI 13GV	1300 mm	42 mm	80 mm	8,00 mm	7,720 kg
KDI 14GV	1400 mm	42 mm	80 mm	8,00 mm	8,260 kg
KDI 15GV	1500 mm	42 mm	80 mm	8,00 mm	8,800 kg
KDI 20GV	2000 mm	42 mm	80 mm	8,00 mm	11,540 kg
KDI 25GV	2500 mm	42 mm	80 mm	8,00 mm	14,270 kg

steel, batch/hot-dip galvanized



# PRODUCT INFORMATION

Products	L	H <sub>p</sub>	B <sub>p</sub>	t	W
KDI 02F	200 mm	42 mm	80 mm	6,00 mm	1,860 kg
KDI 03F	300 mm	42 mm	80 mm	6,00 mm	2,380 kg
KDI 04F	400 mm	42 mm	80 mm	6,00 mm	2,920 kg
KDI 05F	500 mm	42 mm	80 mm	6,00 mm	3,650 kg
KDI 06F	600 mm	42 mm	80 mm	6,00 mm	4,170 kg
KDI 07F	700 mm	42 mm	80 mm	6,00 mm	4,700 kg
KDI 08F	800 mm	42 mm	80 mm	6,00 mm	5,370 kg
KDI 09F	900 mm	42 mm	80 mm	6,00 mm	5,840 kg
KDI 10F	1000 mm	42 mm	80 mm	6,00 mm	6,600 kg
KDI 11F	1100 mm	42 mm	80 mm	8,00 mm	7,100 kg
KDI 12F	1200 mm	42 mm	80 mm	8,00 mm	7,680 kg
KDI 13F	1300 mm	42 mm	80 mm	8,00 mm	8,260 kg
KDI 14F	1400 mm	42 mm	80 mm	8,00 mm	8,840 kg
KDI 15F	1500 mm	42 mm	80 mm	8,00 mm	9,420 kg
KDI 16F	1600 mm	42 mm	80 mm	8,00 mm	10,010 kg
KDI 17F	1700 mm	42 mm	80 mm	8,00 mm	10,590 kg
KDI 18F	1800 mm	42 mm	80 mm	8,00 mm	11,180 kg
KDI 19F	1900 mm	42 mm	80 mm	8,00 mm	11,760 kg
KDI 20F	2000 mm	42 mm	80 mm	8,00 mm	12,350 kg
KDI 21F	2100 mm	42 mm	80 mm	8,00 mm	12,930 kg
KDI 22F	2200 mm	42 mm	80 mm	8,00 mm	13,520 kg
KDI 23F	2300 mm	42 mm	80 mm	8,00 mm	14,100 kg
KDI 24F	2400 mm	42 mm	80 mm	8,00 mm	14,690 kg
KDI 25F	2500 mm	42 mm	80 mm	8,00 mm	15,270 kg
KDI 26F	2600 mm	42 mm	80 mm	8,00 mm	15,890 kg
KDI 27F	2700 mm	42 mm	80 mm	8,00 mm	16,440 kg
KDI 28F	2800 mm	42 mm	80 mm	8,00 mm	17,030 kg
KDI 29F	2900 mm	42 mm	80 mm	8,00 mm	17,610 kg
KDI 30F	3000 mm	42 mm	80 mm	8,00 mm	18,200 kg

L: length  
H<sub>p</sub>: profile height  
B<sub>p</sub>: profile width  
t: material thickness

Page 2



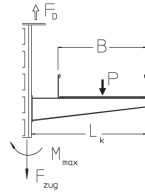
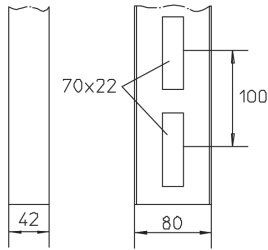
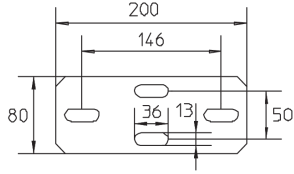
PohlCon GmbH  
Nobelstraße 51 | 12057 Berlin  
Telefon: +49 30 68283-04 | Fax: +49 30 68283-383 | [contact@pohlcon.com](mailto:contact@pohlcon.com)



# PRODUCT INFORMATION

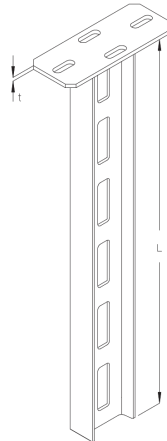
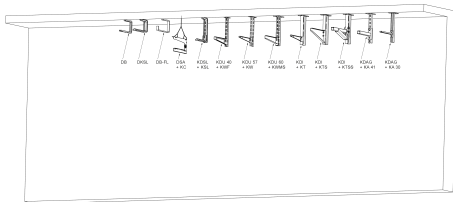
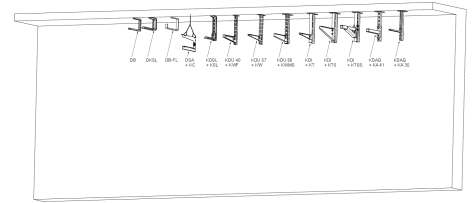
**W:** Weight per storage unit

## DETAIL AND APPLICATION IMAGES



$L \leq 1000$ :  $M_{max} = 1600 \text{ Nm}$   
 $L > 1000$ :  $M_{max} = 2200 \text{ Nm}$   
 $F_{zug} = 20 \text{ kN}$

B	L <sub>k</sub>	P <sub>max</sub> L > 1000	P <sub>max</sub> L < 1000	F <sub>D</sub> P
mm	mm	kN	kN	
100	120	20,0	14,5	1,3
200	220	13,8	10,0	1,6
300	320	10,5	7,6	1,9
400	420	8,5	6,2	2,3
500	520	7,1	5,2	2,6
600	620	6,1	4,4	3,0



## OPTIONAL ACCESSORIES

KHI, KDIA-G, KT, KTS, KTSS, SD, SI

