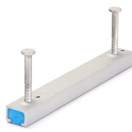


JXA W 29/20

Anchor channel, hot-rolled, toothed, with round or I anchor



The anchor channel JXA W 29/20 is approved throughout Europe by ETA-09/0338 and almost worldwide by ICC-ES ESR-2854. It also has environmental product declaration EPD-JDL-20200260-IBB1-DE. It is made of hot-dip galvanized steel (fv) or stainless steel (A4). It can be supplied in any desired length up to a maximum of 6 m and is paired with the bolts JXD M12 - JXD M12. The profile is 29 mm wide and 20 mm high. The filling is made of polyethylene (PE).



steel, batch/hot-dip galvanized

Products	H	L	H _p	B _p		W
JXARW2920 FVK-0150	85 mm	150 mm	20 mm	29 mm	2 Stk	0,345 kg
JXARW2920 FVK-0200	85 mm	200 mm	20 mm	29 mm	2 Stk	0,430 kg
JXARW2920 FVK-0250	85 mm	250 mm	20 mm	29 mm	2 Stk	0,515 kg
JXARW2920 FVK-0300	85 mm	300 mm	20 mm	29 mm	3 Stk	0,645 kg
JXARW2920 FVK-0350	85 mm	350 mm	20 mm	29 mm	3 Stk	0,730 kg
JXARW2920 FVK-0400	85 mm	400 mm	20 mm	29 mm	3 Stk	0,816 kg
JXARW2920 FVK-0550	85 mm	550 mm	20 mm	29 mm	4 Stk	1,116 kg
JXARW2920 FVK-0800	85 mm	800 mm	20 mm	29 mm	5 Stk	1,587 kg
JXARW2920 FVK-1050	85 mm	1050 mm	20 mm	29 mm	6 Stk	2,057 kg
JXARW2920 FVK-3000	85 mm	3000 mm	20 mm	29 mm	16 Stk	5,828 kg
JXARW2920 FVK-6000	85 mm	6000 mm	20 mm	29 mm	31 Stk	1,935 kg

H: installation height

L: length

H_p: profile height

B_p: profile width

W: Weight per storage unit

ETA

, ETA-09/0338

Page 1

 PohlCon

PohlCon GmbH
Nobelstraße 51 | 12057 Berlin
Telefon: +49 30 68283-04 | Fax: +49 30 68283-383 | contact@pohlcon.com



PRODUCT INFORMATION



, EPD-JDL-20200260-IBB1-DE

