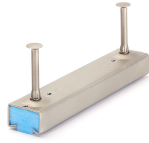


JTA K 50/30

Anchor channel, cold-formed, with round or I anchor



The JTA K 50/30 anchor channel is approved throughout Europe by ETA-09/0338. It also has environmental product declaration EPD-JDL-20200260-IBB1-DE. It is made of hot-dip galvanized steel (fv) or stainless steel (A4). It can be supplied in any desired length up to a maximum of 6 m and is paired with the bolts JB M10 - JB M20. The profile is 50 mm wide and 30 mm high. The filling is made of polyethylene (PE).



steel, batch/hot-dip galvanized

| Products | H | L | H _p | B _p | | weight |
|------------------------|--------|---------|----------------|----------------|----------|-----------|
| JTAK5030-0150-FVKCE | 100 mm | 150 mm | 30 mm | 50 mm | 2 Stk | 0,550 kg |
| JTAK5030-0200-FVKCE | 100 mm | 200 mm | 30 mm | 50 mm | 2 Stk | 0,808 kg |
| JTAK5030-0250-FVKCE | 100 mm | 250 mm | 30 mm | 50 mm | 2 Stk | 0,974 kg |
| JTAK5030-0300-3A-FVKCE | 100 mm | 300 mm | 30 mm | 50 mm | 1,213 kg | |
| JTAK5030-0300-FVKCE | 100 mm | 300 mm | 30 mm | 50 mm | 2 Stk | 1,140 kg |
| JTAK5030-0350-FVKCE | 100 mm | 350 mm | 30 mm | 50 mm | 3 Stk | 1,379 kg |
| JTAK5030-0400-FVKCE | 100 mm | 400 mm | 30 mm | 50 mm | 3 Stk | 1,544 kg |
| JTAK5030-0550-FVKCE | 100 mm | 550 mm | 30 mm | 50 mm | 3 Stk | 2,041 kg |
| JTAK5030-0800-FVKCE | 100 mm | 800 mm | 30 mm | 50 mm | 4 Stk | 2,943 kg |
| JTAK5030-1050-FVKCE | 100 mm | 1050 mm | 30 mm | 50 mm | 5 Stk | 3,460 kg |
| JTAK5030-3000-FVKCE | 100 mm | 3000 mm | 30 mm | 50 mm | 13 Stk | 10,982 kg |
| JTAK5030-6000-FVKCE | 100 mm | 6000 mm | 30 mm | 50 mm | 25 Stk | 3,619 kg |

Stainless steel, according to ASTM 316 Ti / AISI 316 L, BS 320S17 / BS 316S11

| Products | H | L | H _p | B _p | | weight |
|---------------------|--------|--------|----------------|----------------|-------|----------|
| JTAK5030-0150-A4KCE | 100 mm | 150 mm | 30 mm | 50 mm | 2 Stk | 0,553 kg |
| JTAK5030-0200-A4KCE | 100 mm | 200 mm | 30 mm | 50 mm | 2 Stk | 0,699 kg |
| JTAK5030-0250-A4KCE | 100 mm | 250 mm | 30 mm | 50 mm | 2 Stk | 0,846 kg |
| JTAK5030-0300-A4KCE | 100 mm | 300 mm | 30 mm | 50 mm | 2 Stk | 0,993 kg |



PRODUCT INFORMATION

| Products | H | L | H _p | B _p | | weight |
|---------------------|--------|---------|----------------|----------------|--------|----------|
| JTAK5030-0350-A4KCE | 100 mm | 350 mm | 30 mm | 50 mm | 3 Stk | 1,190 kg |
| JTAK5030-0400-A4KCE | 100 mm | 400 mm | 30 mm | 50 mm | 3 Stk | 1,340 kg |
| JTAK5030-0550-A4KCE | 100 mm | 550 mm | 30 mm | 50 mm | 3 Stk | 1,780 kg |
| JTAK5030-0800-A4KCE | 100 mm | 800 mm | 30 mm | 50 mm | 4 Stk | 2,570 kg |
| JTAK5030-1050-A4KCE | 100 mm | 1050 mm | 30 mm | 50 mm | 5 Stk | 3,362 kg |
| JTAK5030-3000-A4KCE | 100 mm | 3000 mm | 30 mm | 50 mm | 13 Stk | 9,540 kg |
| JTAK5030-6000-A4KCE | 100 mm | 6000 mm | 30 mm | 50 mm | 25 Stk | 3,168 kg |

H: installation height
L: length
H_p: profile height
B_p: profile width

OPTIONAL ACCESSORIES

JGM B, JSV50, JKZS

ETA

, ETA-09/0338



, EPD-JDL-20200260-IBB1-DE

