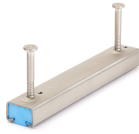


JTA K 40/25

Anchor channel, cold-formed, with round or I anchor



The JTA K 40/25 anchor channel is approved throughout Europe by ETA-09/0338. It also has environmental product declaration EPD-JDL-20200260-IBB1-DE. It is made of hot-dip galvanized steel (fv) or stainless steel (A4). It can be supplied in any desired length up to a maximum of 6 m and is paired with the bolts JC M10 - JC M16. The profile is 40 mm wide and 25 mm high. The filling is made of polyethylene (PE).



steel, batch/hot-dip galvanized

Products	H	L	H _p	B _p	W	
JTAK4025-0100-FVKCE	90 mm	100 mm	25 mm	40 mm	0,319 kg	
JTAK4025-0150-FVKCE	90 mm	150 mm	25 mm	40 mm	2 Stk	0,434 kg
JTAK4025-0200-FVKCE	90 mm	200 mm	25 mm	40 mm	2 Stk	0,549 kg
JTAK4025-0250-3A-FVKCE	90 mm	250 mm	25 mm	40 mm	0,708 kg	
JTAK4025-0250-FVKCE	90 mm	250 mm	25 mm	40 mm	2 Stk	0,663 kg
JTAK4025-0300-3A-FVKCE	90 mm	300 mm	25 mm	40 mm	0,823 kg	
JTAK4025-0300-FVKCE	90 mm	300 mm	25 mm	40 mm	2 Stk	0,778 kg
JTAK4025-0350-FVKCE	90 mm	350 mm	25 mm	40 mm	3 Stk	0,938 kg
JTAK4025-0400-FVKCE	90 mm	400 mm	25 mm	40 mm	3 Stk	1,053 kg
JTAK4025-0550-FVKCE	90 mm	550 mm	25 mm	40 mm	3 Stk	1,397 kg
JTAK4025-0800-FVKCE	90 mm	800 mm	25 mm	40 mm	4 Stk	2,016 kg
JTAK4025-1050-FVKCE	90 mm	1050 mm	25 mm	40 mm	5 Stk	2,635 kg
JTAK4025-3000-FVKCE	90 mm	3000 mm	25 mm	40 mm	13 Stk	7,471 kg
JTAK4025-6000-FVKCE	90 mm	6000 mm	25 mm	40 mm	25 Stk	2,483 kg

Stainless steel, according to ASTM 316 Ti / AISI 316 L, BS 320S17 / BS 316S11

Products	H	L	H _p	B _p	W	
JTAK4025-0150-A4KCE	90 mm	150 mm	25 mm	40 mm	2 Stk	0,371 kg
JTAK4025-0200-A4KCE	90 mm	200 mm	25 mm	40 mm	2 Stk	0,469 kg



PohlCon GmbH
Nobelstraße 51 | 12057 Berlin
Telefon: +49 30 68283-04 | Fax: +49 30 68283-383 | contact@pohlcon.com



PRODUCT INFORMATION

Products	H	L	H _p	B _p	W	
JTAK4025-0250-3A-A4KCE	90 mm	250 mm	25 mm	40 mm	0,606 kg	
JTAK4025-0250-A4KCE	90 mm	250 mm	25 mm	40 mm	2 Stk	0,566 kg
JTAK4025-0300-3A-A4KCE	90 mm	300 mm	25 mm	40 mm	0,703 kg	
JTAK4025-0300-A4KCE	90 mm	300 mm	25 mm	40 mm	2 Stk	0,663 kg
JTAK4025-0350-A4KCE	90 mm	350 mm	25 mm	40 mm	3 Stk	0,800 kg
JTAK4025-0400-A4KCE	90 mm	400 mm	25 mm	40 mm	3 Stk	0,897 kg
JTAK4025-0550-A4KCE	90 mm	550 mm	25 mm	40 mm	3 Stk	1,188 kg
JTAK4025-0800-A4KCE	90 mm	800 mm	25 mm	40 mm	4 Stk	1,714 kg
JTAK4025-1050-A4KCE	90 mm	1050 mm	25 mm	40 mm	5 Stk	2,240 kg
JTAK4025-3000-A4KCE	90 mm	3000 mm	25 mm	40 mm	13 Stk	6,348 kg
JTAK4025-6000-A4KCE	90 mm	6000 mm	25 mm	40 mm	25 Stk	2,109 kg

H: installation height
L: length
H_p: profile height
B_p: profile width
W: Weight per storage unit

OPTIONAL ACCESSORIES

JGM C, JSV40, JVL, JKZS



, ETA-09/0338



, EPD-JDL-20200260-IBB1-DE

