

JSA K 28/15

Anchor channel, cold-formed, for non-load-bearing constructions

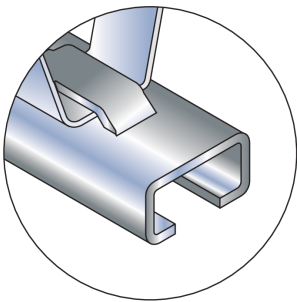
The loop channel JSA K 28/15 is made of rolled plain or hot-dip galvanized steel. The delivered length is 5960 ±60 mm. The anchoring stirrups are inserted through the loop openings at intervals of 250 mm and bent into shape. If holes are spaced at intervals of 125 mm, stirrups are only mounted in every second loop. In all applications, one anchoring stirrup must be installed at the beginning and one at the end of the channel. The filling is made of polyethylene (PE).

steel, batch/hot-dip galvanized

Products	L	B _p	H _p	W
SAK2815 FVK-6000	6000 mm	28 mm	15 mm	1,340 kg

L: length
B_p: profile width
H_p: profile height
W: Weight per storage unit

DETAIL AND APPLICATION IMAGES



OPTIONAL ACCESSORIES

JGM D

Page 1





PohlCon GmbH
Nobelstraße 51 | 12057 Berlin
Telefon: +49 30 68283-04 | Fax: +49 30 68283-383 | contact@pohlcon.com

