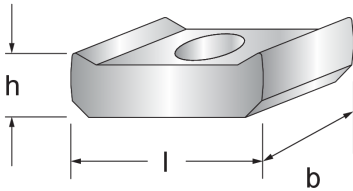


## JGM A

### Hook-head locking plate, threaded plate for spaced mounting

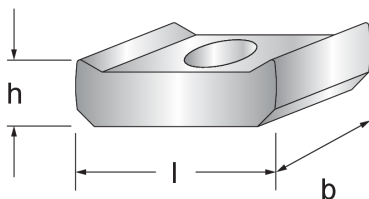


JGM A hook-head locking plates are threaded plates that are inserted at any point of the corresponding anchor or mounting channel. The threaded hole is centred by turning the nut 90° after inserting or tipping in the nut. Locking plates are used for spaced mounting with long bolts or threaded rods. When screwing in the threaded rod, the locking plates tilt and create an efficient connection without requiring additional locking. The JGM A hook-head locking plates are forged to an exact shape and therefore cannot turn back. They are available in galvanised steel or stainless steel (A4) and in various threads to fit numerous rails.

Products	H	B	L	W
GGA16 GV	22 mm	31 mm	57 mm	0,230 kg
GGA20 GV	22 mm	31 mm	57 mm	0,223 kg
GGA12 GV	22 mm	31 mm	57 mm	0,228 kg

**H:** height  
**B:** width  
**L:** length  
**W:** Weight per storage unit

## DETAIL AND APPLICATION IMAGES





PohlCon GmbH  
Nobelstraße 51 | 12057 Berlin  
Telefon: +49 30 68283-04 | Fax: +49 30 68283-383 | [contact@pohlcon.com](mailto:contact@pohlcon.com)

