

HS18

Tee-head bolt

HS18 tee-head bolts are used to fasten companion structures to the profile rails A7, A8 and A9. Their heads are shaped like hammers and they have a notch at the end of the shaft. The screws are available in lengths from 30 to 80 mm and are supplied with nuts. We provide components in various materials and surface finishes to ensure that various corrosion protection requirements for different areas of application are met.

steel, galvanic zinc plated

| Products | L | Ø | W |
|----------------------|-------|-------|----------|
| HS18 10X30 | 30 mm | 10 mm | 0,062 kg |
| incl.: | | | |
| ? x SK10 GV ISO 4032 | | | |
| HS18 10X40 | 40 mm | 10 mm | 0,067 kg |
| incl.: | | | |
| ? x SK10 GV ISO 4032 | | | |
| HS18 10X50 | 50 mm | 10 mm | 0,072 kg |
| incl.: | | | |
| ? x SK10 GV ISO 4032 | | | |
| HS18 10X60 | 60 mm | 10 mm | 0,077 kg |
| incl.: | | | |
| ? x SK10 GV ISO 4032 | | | |
| HS18 12X30 | 30 mm | 12 mm | 0,074 kg |
| incl.: | | | |
| ? x SK12 GV ISO 4032 | | | |
| HS18 12X40 | 40 mm | 12 mm | 0,081 kg |
| incl.: | | | |
| ? x SK12 GV ISO 4032 | | | |
| HS18 12X60 | 60 mm | 12 mm | 0,096 kg |
| incl.: | | | |
| ? x SK12 GV ISO 4032 | | | |

Page 1



PRODUCT INFORMATION

| Products | L | Ø | W |
|----------------------|-------|-------|----------|
| HS18 16X40 | 40 mm | 16 mm | 0,142 kg |
| incl.: | | | |
| ? x SK16 GV ISO 4032 | | | |
| HS18 16X60 | 60 mm | 16 mm | 0,168 kg |
| incl.: | | | |
| ? x SK16 GV ISO 4032 | | | |
| HS18 16X80 | 80 mm | 16 mm | 0,195 kg |
| incl.: | | | |
| ? x SK16 GV ISO 4032 | | | |

Stainless steel, according to ASTM 316 Ti / AISI 316 L, BS 320S17 / BS 316S11

| Products | L | Ø | W |
|----------------------|-------|-------|----------|
| HS18 10X30E4 | 30 mm | 10 mm | 0,063 kg |
| incl.: | | | |
| ? x SK10 A4 ISO 4032 | | | |
| HS18 10X40E4 | 40 mm | 10 mm | 0,068 kg |
| incl.: | | | |
| ? x SK10 A4 ISO 4032 | | | |
| HS18 10X50E4 | 50 mm | 10 mm | 0,073 kg |
| incl.: | | | |
| ? x SK10 A4 ISO 4032 | | | |

L: length
Ø: thread diameter
W: Weight per storage unit

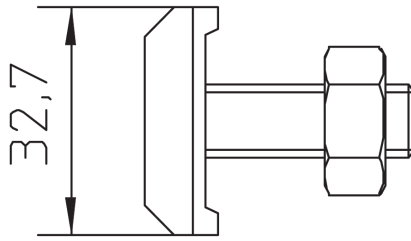
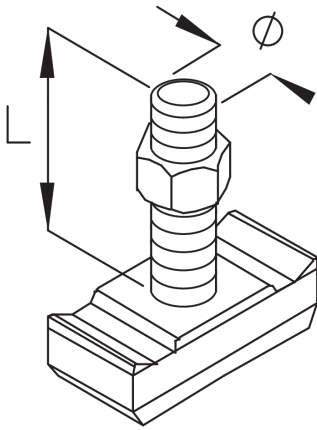
DETAIL AND APPLICATION IMAGES

Page 2



PohlCon GmbH
Nobelstraße 51 | 12057 Berlin
Telefon: +49 30 68283-04 | Fax: +49 30 68283-383 | contact@pohlcon.com





OPTIONAL ACCESSORIES

A 7, A 8, A 9

