

HF-ES 50 5-6

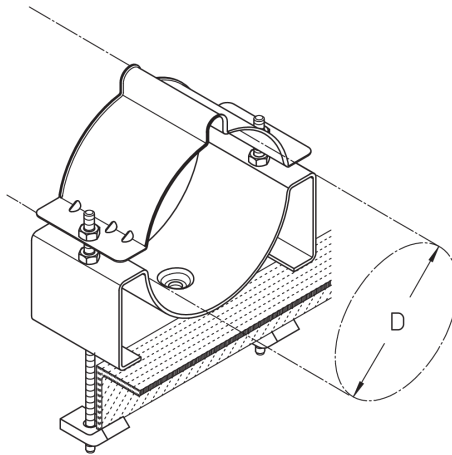
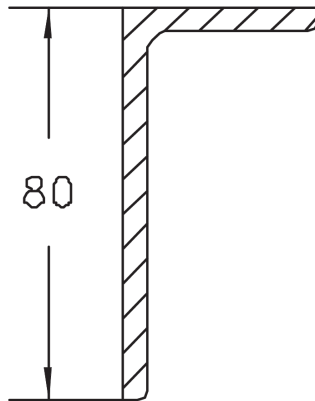
HF cable clamp for fastening to angle profiles

The HF cable clamps HF-ES 50 5-6 can be used to route fibre-optic/high-frequency cables with a maximum diameter of 160 mm. They are suitable for attachment to angle profiles with a leg length of max. 50 mm. They are made of galvanised steel. Use HF-EE clamp inserts to accommodate various elliptical cables.

steel, batch/hot-dip galvanized

Products			weight
HF-ES 50 5	E-26-30	128 mm	0,803 kg
HF-ES 50 6	E-20	160 mm	1,200 kg

DETAIL AND APPLICATION IMAGES



OPTIONAL ACCESSORIES

HF-EE

Page 1





PohlCon GmbH
Nobelstraße 51 | 12057 Berlin
Telefon: +49 30 68283-04 | Fax: +49 30 68283-383 | contact@pohlcon.com

