

GBAG 20  
GBAG 30

GBAG 10

## GBAG

### Middle suspending bracket, external

The external central suspension GBAG is used for suspending mesh cable trays up to 300 mm wide from ceilings. It is designed for loads of up to 0.5 kN. We provide components in various materials and surface finishes to ensure that the corrosion requirements are met for all sorts of applications. The GB threaded rod is 1000 mm long and is included in the set. FD/P: factor for calculating the dowel load FD with the actual bracket load P or the sum of the actual bracket loads.

### steel, continuously hot galvanized/Sendzimir process

Products	H	B	L	$P_{max}$	$F_D/P$	W
GBAG 10S	1000 mm	20 mm	41 mm	0,50 kN	1,00	0,356 kg
incl.:						
1 × GB M8-10, 2 × GV-L 30F, 1 × US 8X17, 3 × SEM 8						
GBAG 20S	1000 mm	30 mm	180 mm	0,50 kN	1,00	0,514 kg
incl.:						
1 × GB M8-10, 1 × GV-L 30F, 3 × SEM 8, 1 × US 8X25						
GBAG 30S	1000 mm	30 mm	280 mm	0,50 kN	1,00	0,654 kg
incl.:						
3 × SEM 8, 1 × GB M8-10, 1 × GV-L 30F, 1 × US 8X25						

### Stainless steel, according to ASTM 304 / BS 304 S 3

Products	H	B	L	$P_{max}$	$F_D/P$	W
GBAG 10E	1000 mm	20 mm	41 mm	0,50 kN	1,00	0,356 kg
incl.:						
1 × GB M8-10E, 3 × SEM 8E, 1 × US 8X17E, 2 × GV-L 30E						
GBAG 20E	1000 mm	30 mm	180 mm	0,50 kN	1,00	0,515 kg
incl.:						
1 × GB M8-10E, 3 × SEM 8E, 1 × US 8X25E, 1 × GV-L 30E						
GBAG 30E	1000 mm	30 mm	280 mm	0,50 kN	1,00	0,655 kg

Page 1

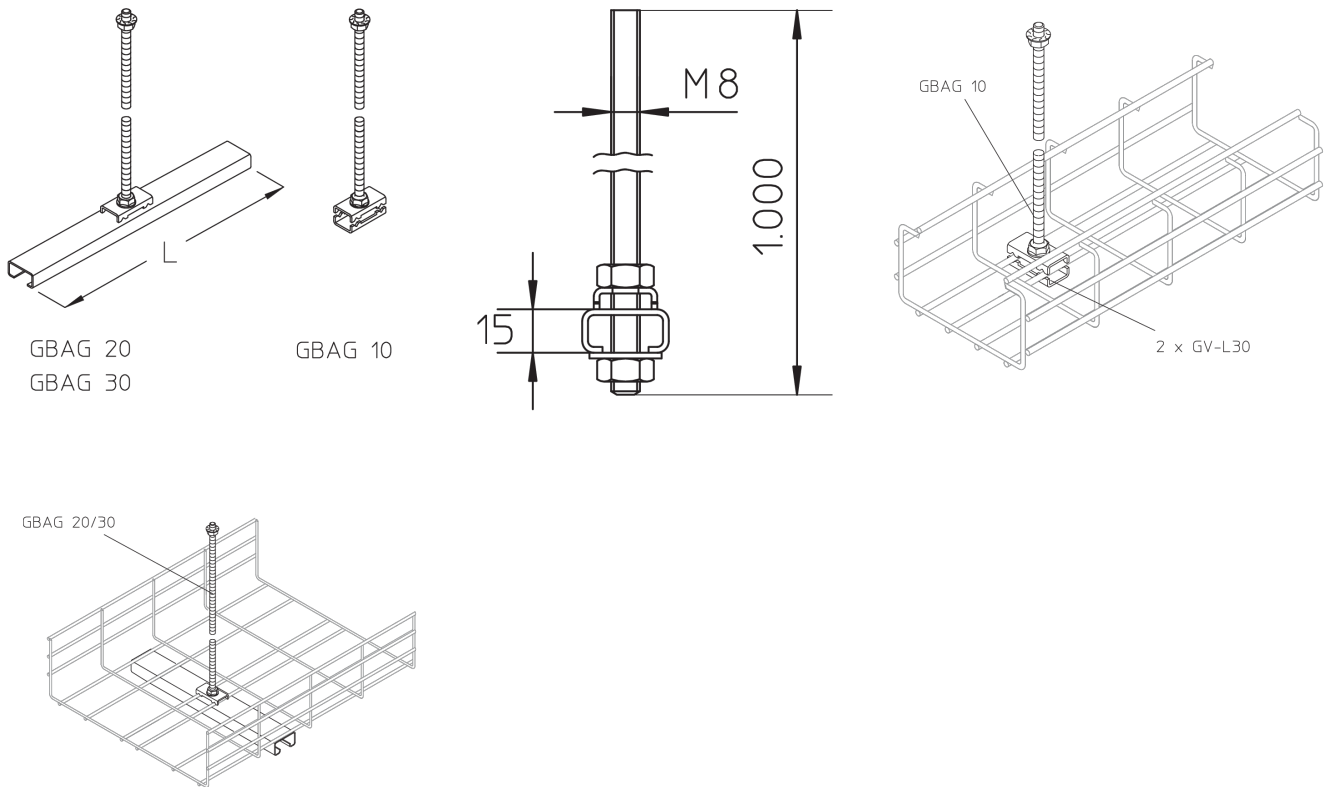


# PRODUCT INFORMATION

Products	H	B	L	$P_{max}$	$F_D/P$	W
incl.:						
1 × GB M8-10E, 3 × SEM 8E, 1 × US 8X25E, 1 × GV-L 30E						

**H:** height  
**B:** width  
**L:** length  
 **$P_{max}$ :** maximum load  
 **$F_D/P$ :** dowel-to-anchor load  
**W:** Weight per storage unit

## DETAIL AND APPLICATION IMAGES



## OPTIONAL ACCESSORIES

SD, SAZ, VM

