



FERBOX® Type EE

FERBOX® Type EE single-row connected rebend connections are used for the frictional connection and reinforcement of reinforced concrete parts. They are suitable for wide walls from 280 mm wall thick. They have the highest joint category – Interlocked – in transverse and longitudinal directions. Its studded reinforcement box and cover are made of galvanised sheet metal and the reinforcing bars are made of B500 B. The stirrups are U-shaped for the first casting section, ending in both parallel boxes. The FERBOX® box is either 800 or 1200 mm long and the stirrups are up to 500 mm wide. The standard diameter of the rods is 8 to 10 mm. Other versions and special solutions are available on request.

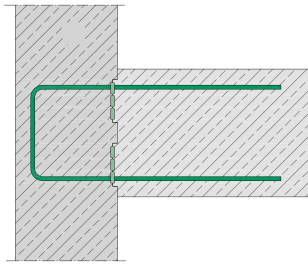


Products		W
512600022734	Ferb EE 60 08 150 0.8	3,872 kg
512600022077	Ferb EE 60 08 150 1.20	5,808 kg
512600022735	Ferb EE 60 08 200 0.80	3,304 kg
512600022078	Ferb EE 60 08 200 1.20	4,956 kg
512600022736	Ferb EE 60 10 150 0.80	5,584 kg
512600022079	Ferb EE 60 10 150 1.20	8,376 kg
512600022737	Ferb EE 60 10 200 0.80	4,584 kg
512600022080	Ferb EE 60 10 200 1.20	6,876 kg
512600022738	Ferb EE 85 12 150 0.80	7,968 kg
512600022081	Ferb EE 85 12 150 1.20	11,952 kg
512600022739	Ferb EE 85 12 200 0.80	6,104 kg
512600022082	Ferb EE 85 12 200 1.20	9,156 kg

W: Weight per storage unit

DETAIL AND APPLICATION IMAGES





, ETA-20/0842

