

FERBOX® Type E03

Rebend connection with straight bars

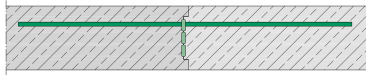
FERBOX® Type E03 single-row rebend connections are used for the frictional connection and reinforcement of reinforced concrete parts. They are suitable for narrow walls from 100 mm wall thick. They have the highest joint category – Interlocked – in transverse and longitudinal directions. Its studded reinforcement box and cover are made of galvanised sheet metal and the reinforcing bars are made of B500 B. The bars run straight for the first casting section. The FERBOX® box is either 800 or 1200 mm long and 60 to 135 mm wide. The standard diameter of the rods is 8 to 10 mm. Other versions and special solutions are available on request.



Products		weight
512400022725	Ferb E03 60 08 150 0.80	1,736 kg
512400022062	Ferb E03 60 08 150 1.20	2,604 kg
512400022726	Ferb E03 60 08 200 0.80	1,408 kg
512400022063	Ferb E03 60 08 200 1.20	2,112 kg
512400022727	Ferb E03 60 08 250 0.80	1,248 kg
512400022064	Ferb E03 60 08 250 1.20	1,872 kg
512400022728	Ferb E03 60 10 150 0.80	2,912 kg
512400022065	Ferb E03 60 10 150 1.20	4,368 kg
512400022729	Ferb E03 60 10 200 0.80	2,288 kg
512400022066	Ferb E03 60 10 200 1.20	3,432 kg
512400022730	Ferb E03 60 10 250 0.80	1,984 kg
512400022067	Ferb E03 60 10 250 1.20	2,976 kg
512400022731	Ferb E03 85 12 150 0.80	5,168 kg
512400022068	Ferb E03 85 12 150 1.20	7,752 kg
512400022732	Ferb E03 85 12 200 0.80	4,120 kg
512400022069	Ferb E03 85 12 200 1.20	6,180 kg
512400022733	Ferb E03 85 12 250 0.80	3,600 kg
512400022070	Ferb E03 85 12 250 1.20	5,400 kg



DETAIL AND APPLICATION IMAGES



, ETA-20/0842

