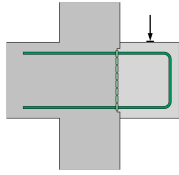


## FERBOX® Type B06

Rebend connection with fold-out stirrup



FERBOX® Type B06 double-row rebend connections are used for the frictional connection and reinforcement of reinforced concrete parts from two different casting stages. These are solutions for walls from 120 mm thick. They have the highest joint category – Interlocked – in transverse and longitudinal directions.. Their studded reinforcement box and cover are made of galvanised sheet metal and the reinforcement stirrups are made of B500 B or stainless steel. The stirrups have two straight bars for the first casting section. The FERBOX® box is either 800 or 1200 mm long and 85 to 260 mm wide. The standard diameter of the rods is 8 to 12 mm. Special solutions are available on request.



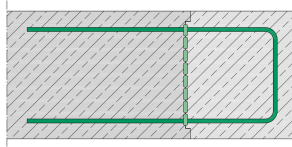
Products		weight
512500022695	Ferb B06 85 08 150 0.80	2,576 kg
512500022071	Ferb B06 85 08 150 1.20	3,864 kg
512500022696	Ferb B06 85 08 200 0.80	2,136 kg
512500022072	Ferb B06 85 08 200 1.20	3,204 kg
512500022697	Ferb B06 85 08 250 0.80	1,640 kg
512500022073	Ferb B06 85 08 250 1.20	2,460 kg
512500022698	Ferb B06 85 10 150 0.80	4,024 kg
512500022074	Ferb B06 85 10 150 1.20	6,036 kg
512500022699	Ferb B06 85 10 200 0.80	3,216 kg
512500022075	Ferb B06 85 10 200 1.20	4,824 kg
512500022700	Ferb B06 85 10 250 0.80	2,312 kg
512500022076	Ferb B06 85 10 250 1.20	3,468 kg

## DETAIL AND APPLICATION IMAGES



# PRODUCT INFORMATION

---



ETA

, ETA-20/0842

