

## FERBOX® Type B05

### Double-row rebend connection

FERBOX® Type B05 double-row rebend connections are used for the frictional connection and reinforcement of reinforced concrete parts from two different casting stages. These are solutions for walls from 145 mm thick. They have 30 mm concrete cover and the highest joint category – Interlocked – in transverse and longitudinal directions. Their studded reinforcement box and cover are made of galvanised sheet metal and the reinforcement stirrups are made of B500 B or stainless steel. The stirrups are U-shaped for the first casting section. They are available with boxes 800 or 1200 mm long, 110 to 260 mm wide and have bars with standard diameters of 8 to 12 mm. Other versions and special solutions are available on request.



Products		weight
512100021969	Ferb B05 110 08 150 1.20	4,752 kg
512100021970	Ferb B05 110 08 200 1.20	3,948 kg
512100021971	Ferb B05 110 10 150 1.20	7,056 kg
512100021972	Ferb B05 110 10 200 1.20	5,676 kg
512100021973	Ferb B05 110 12 150 1.20	10,524 kg
512100021974	Ferb B05 110 12 200 1.20	8,328 kg
512100021975	Ferb B05 135 08 100 1.20	6,852 kg
512100021976	Ferb B05 135 08 150 1.20	5,208 kg
512100021977	Ferb B05 135 08 200 1.20	4,392 kg
512100021978	Ferb B05 135 10 100 1.20	10,380 kg
512100021979	Ferb B05 135 10 150 1.20	7,560 kg
512100021980	Ferb B05 135 10 200 1.20	6,156 kg
512100021981	Ferb B05 135 12 100 1.20	14,868 kg
512100021982	Ferb B05 135 12 150 1.20	11,244 kg
512100021983	Ferb B05 135 12 200 1.20	8,928 kg
512100021984	Ferb B05 160 08 100 1.20	7,152 kg
512100021985	Ferb B05 160 08 150 1.20	5,436 kg
512100021986	Ferb B05 160 08 200 1.20	4,596 kg
512100021987	Ferb B05 160 10 100 1.20	10,692 kg

Page 1



# PRODUCT INFORMATION

Products		weight
512100021988	Ferb B05 160 10 150 1.20	7,824 kg
512100021989	Ferb B05 160 10 200 1.20	6,396 kg
512100021990	Ferb B05 160 12 100 1.20	16,272 kg
512100021991	Ferb B05 160 12 150 1.20	11,580 kg
512100021992	Ferb B05 160 12 200 1.20	9,228 kg
512100021993	Ferb B05 185 08 100 1.20	7,512 kg
512100021994	Ferb B05 185 08 150 1.20	5,652 kg
512100021995	Ferb B05 185 08 200 1.20	4,800 kg
512100021996	Ferb B05 185 10 100 1.20	10,980 kg
512100021997	Ferb B05 185 10 150 1.20	8,076 kg
512100021998	Ferb B05 185 10 200 1.20	6,624 kg
512100021999	Ferb B05 185 12 100 1.20	16,668 kg
512100022000	Ferb B05 185 12 150 1.20	11,904 kg
512100022001	Ferb B05 185 12 200 1.20	9,528 kg
512100022002	Ferb B05 210 08 100 1.20	7,668 kg
512100022003	Ferb B05 210 08 150 1.20	5,856 kg
512100022004	Ferb B05 210 08 200 1.20	4,992 kg
512100022005	Ferb B05 210 10 100 1.20	11,256 kg
512100022006	Ferb B05 210 10 150 1.20	8,304 kg
512100022007	Ferb B05 210 10 200 1.20	6,828 kg
512100022008	Ferb B05 210 12 100 1.20	17,016 kg
512100022009	Ferb B05 210 12 150 1.20	12,180 kg
512100022010	Ferb B05 210 12 200 1.20	9,768 kg
512100022011	Ferb B05 235 08 100 1.20	7,824 kg
512100022012	Ferb B05 235 08 150 1.20	6,060 kg
512100022013	Ferb B05 235 08 200 1.20	5,172 kg
512100022014	Ferb B05 235 10 100 1.20	11,544 kg
512100022015	Ferb B05 235 10 150 1.20	8,532 kg
512100022016	Ferb B05 235 10 200 1.20	7,044 kg
512100022017	Ferb B05 235 12 100 1.20	17,352 kg
512100022018	Ferb B05 235 12 150 1.20	12,468 kg
512100022019	Ferb B05 235 12 200 1.20	10,020 kg
512100022020	Ferb B05 260 08 100 1.20	9,636 kg
512100022021	Ferb B05 260 08 150 1.20	7,776 kg

Page 2



PohlCon GmbH  
Nobelstraße 51 | 12057 Berlin  
Telefon: +49 30 68283-04 | Fax: +49 30 68283-383 | [contact@pohlcon.com](mailto:contact@pohlcon.com)

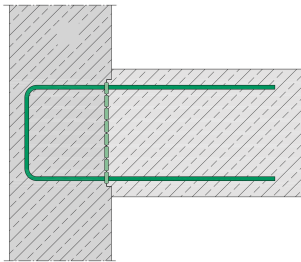


# PRODUCT INFORMATION

---

Products		weight
512100022022	Ferb B05 260 08 200 1.20	6,840 kg
512100022023	Ferb B05 260 10 100 1.20	13,764 kg
512100022024	Ferb B05 260 10 150 1.20	10,536 kg
512100022025	Ferb B05 260 10 200 1.20	8,916 kg
512100022026	Ferb B05 260 12 100 1.20	19,788 kg
512100022027	Ferb B05 260 12 150 1.20	14,664 kg
512100022028	Ferb B05 260 12 200 1.20	12,096 kg

## DETAIL AND APPLICATION IMAGES



ETA

, ETA-20/0842

