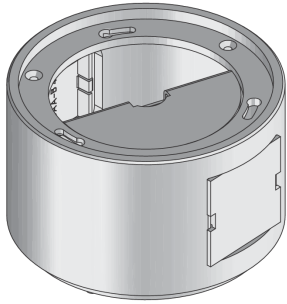


## BODO NAT

On-floor tube outlet, empty



BODO NAT components are round on-floor tube outlets with an empty tube outlet that can be closed using a bayonet catch. The tube outlets can accommodate two 45x45 mm installation devices, but they can only be used in conjunction with a dummy cable outlet. They can be installed in screed and raised or false floor openings in wet-cleaned or dry-cleaned rooms with high traffic loads. The tube outlets are made of aluminium and have an IP protection rating of IP 66 in an unused condition and IP 20 when used. They are 70 mm high and 120 mm wide.



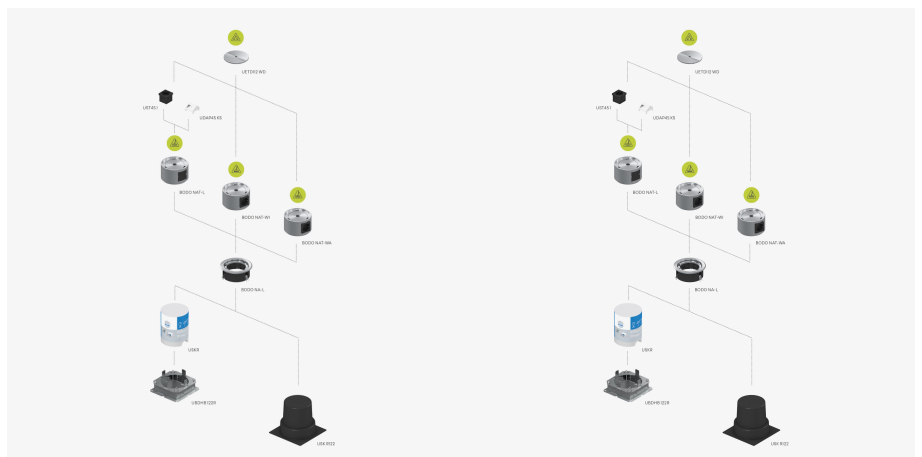
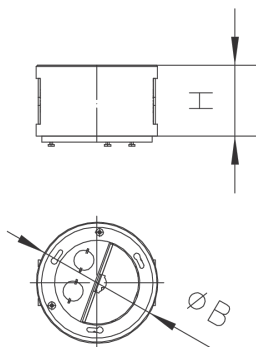
Products	$P_{max}$	$IP_g$	$IP_n$	color	weight
BODO NAT-L	15,00 kN	IP-20	IP-66	ALUMINIUM	0,695 kg

$P_{max}$ : maximum load

$IP_g$ : IP protection level in used condition

$IP_n$ : IP protection level in unused condition

## DETAIL AND APPLICATION IMAGES



## OPTIONAL ACCESSORIES

BODO NA



wet maintained



dry maintained



Load requirements according to, DIN EN 50085

