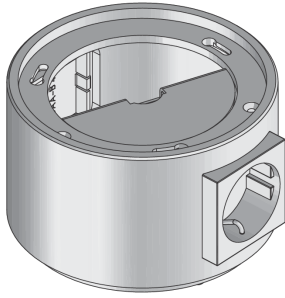


BODO NAT-W

On-floor tube outlet with one socket



BODO NAT-W components are round on-floor tube outlets that can be closed using a bayonet catch and are equipped with a black Schuko socket and a black snap-in connector. The outlets can only be used in conjunction with a dummy cable outlet and can be supplemented with an additional 45x45 mm installation device or a tube outlet pre-assembled by Wieland or WAGO. They can be installed in screed and raised or false floor openings in wet-cleaned or dry-cleaned rooms with high traffic loads. The tube outlets are made of aluminium with a black finish and have an IP protection rating of IP 66 in an unused condition and IP 20 when used.



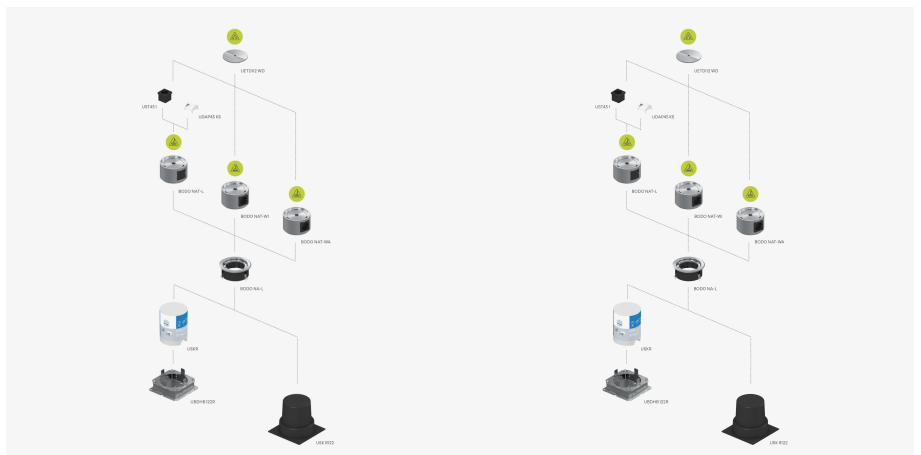
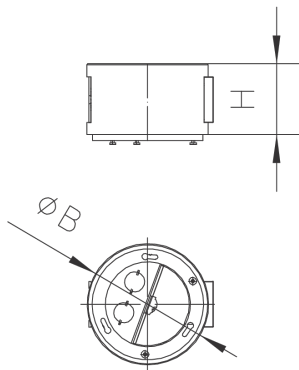
Products	P_{max}	IP_g	IP_n	color		weight
BODO NAT-WA	15,00 kN	IP-20	IP-66	ALUMINIUM	SCHWARZ	0,867 kg
BODO NAT-WI	15,00 kN	IP-20	IP-66	ALUMINIUM	SCHWARZ	0,878 kg

P_{max} : maximum load

IP_g : IP protection level in used condition

IP_n : IP protection level in unused condition

DETAIL AND APPLICATION IMAGES



Page 1



OPTIONAL ACCESSORIES

BODO NA



wet maintained



dry maintained



Load requirements according to, DIN EN 50085

