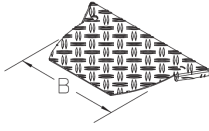


## BKVAADR-WZB AL

Floor duct attachment branch cover, variable made of aluminium diamond plate



The BKVAADR-WZB AL variable floor duct attachment branch cover is placed on top of the BKVAA floor duct attachment branch and protects cables and supply lines from flying sparks and other mechanical effects. It is 100 to 600 mm wide corresponding to the attachment branch. The floor duct attachment branch cover is made of aluminium diamond plate with slip resistance class R10. With a maximum compartment size of 200 mm, we guarantee a tested load capacity of 3.00 kN according to EN 50085-2-2. They come with pre-assembled turning bolts.



### aluminium

Products	B	t	P <sub>max</sub>	weight
BKVAADR-WZB 10AL	100 mm	2,50 mm	3,00 kN	0,180 kg
BKVAADR-WZB 15AL	150 mm	2,50 mm	3,00 kN	0,240 kg
BKVAADR-WZB 20AL	200 mm	2,50 mm	3,00 kN	0,350 kg
BKVAADR-WZB 30AL	300 mm	2,50 mm	3,00 kN	0,560 kg
BKVAADR-WZB 40AL	400 mm	2,50 mm	3,00 kN	0,870 kg
BKVAADR-WZB 50AL	500 mm	2,50 mm	3,00 kN	1,260 kg
BKVAADR-WZB 60AL	600 mm	2,50 mm	3,00 kN	1,730 kg

**B:** width

**t:** material thickness

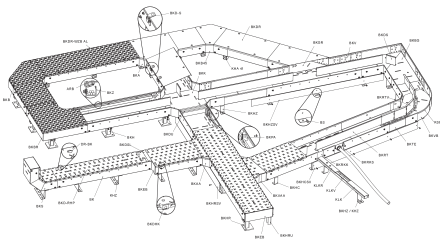
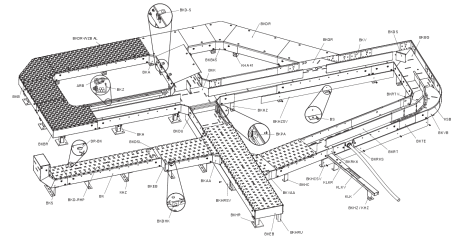
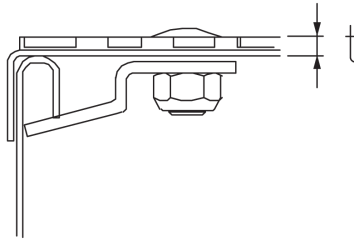
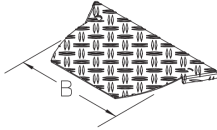
**P<sub>max</sub>:** maximum load

## DETAIL AND APPLICATION IMAGES



# PRODUCT INFORMATION

---



## OPTIONAL ACCESSORIES

DR-BK, BKDU 100, BKDU 110

**DIN**

Load requirements according to, EN 50085-2-2

