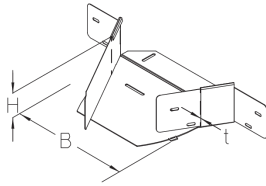


## BKVAA 110

Floor duct attachment branch, variable, height = 110 mm



The BKVAA 110 variable floor duct attachment branch with integrated connectors enables another floor duct to be branched off at a variable angle of 60 to 120°. It is 110 mm high and 100 to 600 mm wide. It is made of sendzimir hot-dip galvanised steel. To dissipate vertical live loads, one separating strip must be installed for widths  $\geq 300$  mm and two separating strips for widths  $\geq 500$  mm. The side rail of the main floor duct is cut out accordingly at the point where the connecting floor duct will branch off. The BKVAA variable attachment branch is positioned and bolted in place at this point. The branching floor duct can then be pushed in.

steel, continously hot galvanized/Sendzimir process

Products	H	B	t	W
BKVAA 110-10S	110 mm	100 mm	2,00 mm	1,296 kg
incl.:				
4 x KLR				
BKVAA 110-15S	110 mm	150 mm	2,00 mm	1,521 kg
incl.:				
4 x KLR				
BKVAA 110-20S	110 mm	200 mm	2,00 mm	1,786 kg
incl.:				
4 x KLR				
BKVAA 110-30S	110 mm	300 mm	2,00 mm	2,379 kg
incl.:				
4 x KLR				
BKVAA 110-40S	110 mm	400 mm	2,00 mm	3,174 kg
incl.:				
4 x KLR				
BKVAA 110-50S	110 mm	500 mm	2,00 mm	3,946 kg
incl.:				
4 x KLR				
BKVAA 110-60S	110 mm	600 mm	2,00 mm	5,290 kg
incl.:				
4 x KLR				

Page 1

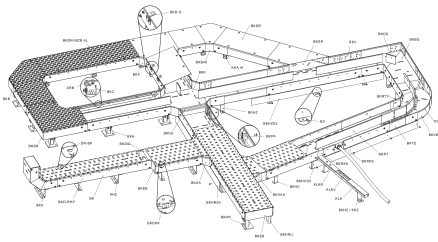
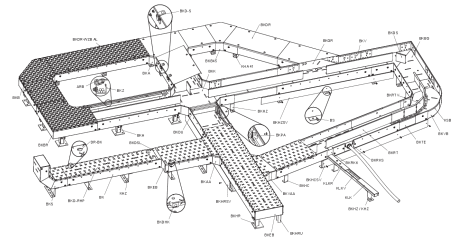
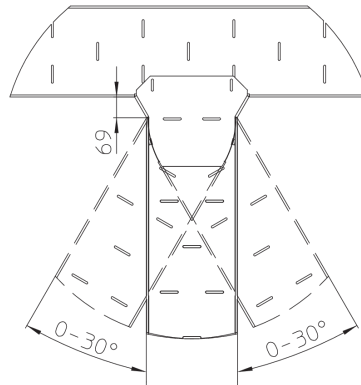
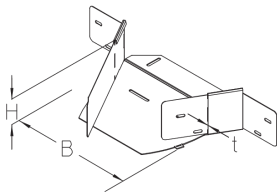


# PRODUCT INFORMATION

---

**H:** height  
**B:** width  
**t:** material thickness  
**W:** Weight per storage unit

## DETAIL AND APPLICATION IMAGES



## OPTIONAL ACCESSORIES

BKVAADR, BKVAADR-RHP, BKVAADR-WZB AL, BKRTV 110, BKDS 110

