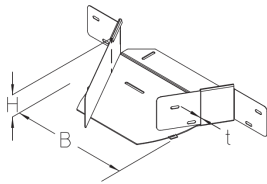


BKVAA 100

Floor duct attachment branch, variable, height = 100 mm



The BKVAA 100 variable floor duct attachment branch with integrated connectors enables another floor duct to be branched off at a variable angle of 60 to 120°. It is 100 mm high and 100 to 600 mm wide. It is made of sendzimir hot-dip galvanized steel. To dissipate vertical live loads, one separating strip must be installed for widths ≥ 300 mm and two separating strips for widths ≥ 500 mm. The side rail of the main floor duct is cut out accordingly at the point where the connecting floor duct will branch off. The BKVAA variable attachment branch is positioned and bolted in place at this point. The branching floor duct can then be pushed in.

steel, continously hot galvanized/Sendzimir process

Products	H	B	t	W
BKVAA 100-10S	100 mm	100 mm	2,00 mm	1,227 kg
incl.:				
4 x KLR				
BKVAA 100-15S	100 mm	150 mm	2,00 mm	1,449 kg
incl.:				
4 x KLR				
BKVAA 100-20S	100 mm	200 mm	2,00 mm	1,712 kg
incl.:				
4 x KLR				
BKVAA 100-30S	100 mm	300 mm	2,00 mm	2,302 kg
incl.:				
4 x KLR				
BKVAA 100-40S	100 mm	400 mm	2,00 mm	3,092 kg
incl.:				
4 x KLR				
BKVAA 100-50S	100 mm	500 mm	2,00 mm	4,045 kg
incl.:				
4 x KLR				
BKVAA 100-60S	100 mm	600 mm	2,00 mm	5,197 kg
incl.:				
4 x KLR				

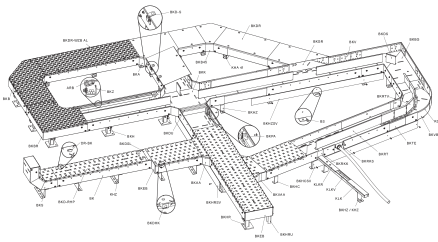
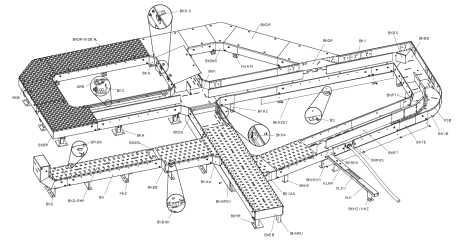
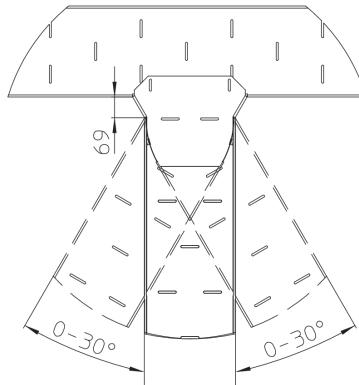
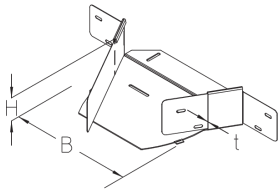
Page 1



PRODUCT INFORMATION

H: height
B: width
t: material thickness
W: Weight per storage unit

DETAIL AND APPLICATION IMAGES



OPTIONAL ACCESSORIES

BKVAADR, BKVAADR-RHP, BKVAADR-WZB AL, BKRTV 100, BKDS 100

