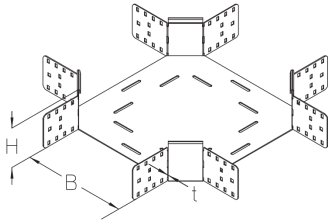


## BKK 110

Floor duct crossing, height = 110 mm



The floor duct crossing BKK 110 with integrated connectors is a formed part for horizontally crossing floor ducts. It is 110 mm high and 100 to 600 mm wide. It is made of sendzimir hot-dip galvanized steel. To dissipate vertical live loads, one separating strip must be installed in the floor duct for widths  $\geq 300$  mm and two separating strips for widths  $\geq 500$  mm. The crossing is pushed into the floor ducts and then bolted in place.

steel, continuously hot galvanized/Sendzimir process

Products	H	B	t	weight
BKK 110-10S	110 mm	100 mm	2,00 mm	3,602 kg
incl.:				
8 × KLR				
BKK 110-15S	110 mm	150 mm	2,00 mm	3,982 kg
incl.:				
8 × KLR				
BKK 110-20S	110 mm	200 mm	2,00 mm	4,442 kg
incl.:				
8 × KLR				
BKK 110-30S	110 mm	300 mm	2,00 mm	5,512 kg
incl.:				
8 × KLR				
BKK 110-40S	110 mm	400 mm	2,00 mm	6,972 kg
incl.:				
8 × KLR				
BKK 110-50S	110 mm	500 mm	2,00 mm	8,732 kg
incl.:				
8 × KLR				
BKK 110-60S	110 mm	600 mm	2,00 mm	10,822 kg
incl.:				
8 × KLR				

Page 1

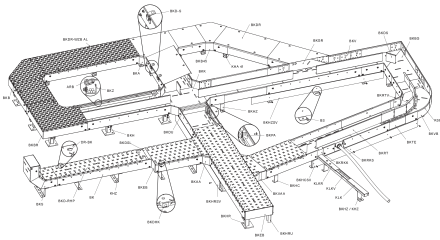
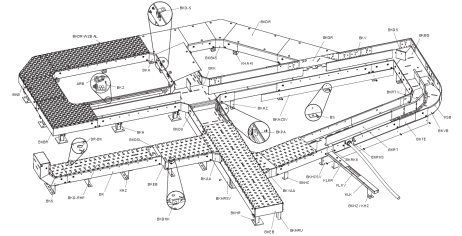
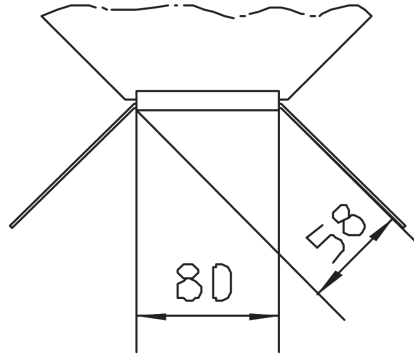
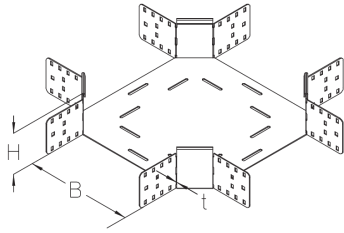


# PRODUCT INFORMATION

---

**H:** height  
**B:** width  
**t:** material thickness

## DETAIL AND APPLICATION IMAGES



## OPTIONAL ACCESSORIES

BKKDR, BKKDR-RHP, BKKDR-WZB AL, BKRTV 110, BKDS 110

