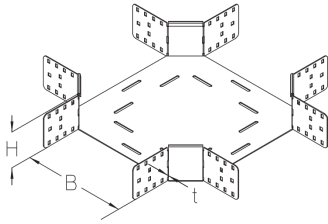


BKK 100

Floor duct crossing, height = 100 mm



The floor duct crossing BKK 100 with integrated connectors is a formed part for horizontally crossing floor ducts. It is 100 mm high and 100 to 600 mm wide. It is made of sendzimir hot-dip galvanised steel. To dissipate vertical live loads, one separating strip must be installed in the floor duct for widths ≥ 300 mm and two separating strips for widths ≥ 500 mm. The crossing is pushed into the floor ducts and then bolted in place.

steel, continuously hot galvanized/Sendzimir process

Products	H	B	t	W
BKK 100-10S	100 mm	100 mm	2,00 mm	3,202 kg
incl.:				
8 x KLR				
BKK 100-15S	100 mm	150 mm	2,00 mm	3,582 kg
incl.:				
8 x KLR				
BKK 100-20S	100 mm	200 mm	2,00 mm	4,042 kg
incl.:				
8 x KLR				
BKK 100-30S	100 mm	300 mm	2,00 mm	5,112 kg
incl.:				
8 x KLR				
BKK 100-40S	100 mm	400 mm	2,00 mm	6,572 kg
incl.:				
8 x KLR				
BKK 100-50S	100 mm	500 mm	2,00 mm	8,332 kg
incl.:				
8 x KLR				
BKK 100-60S	100 mm	600 mm	2,00 mm	10,422 kg
incl.:				
8 x KLR				

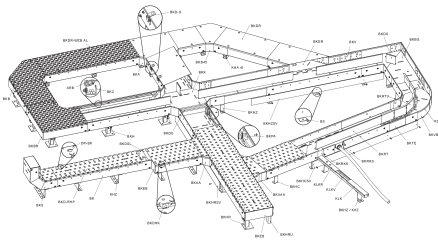
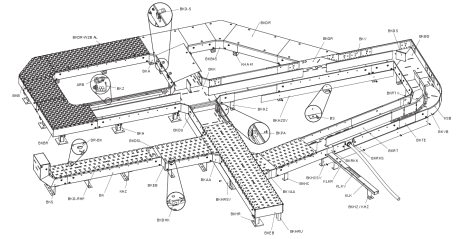
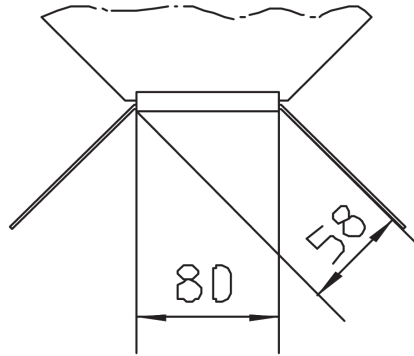
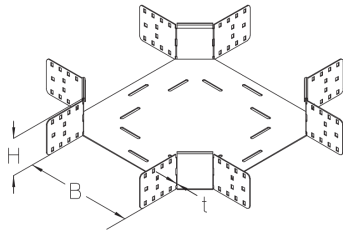
Page 1



PRODUCT INFORMATION

H: height
B: width
t: material thickness
W: Weight per storage unit

DETAIL AND APPLICATION IMAGES



OPTIONAL ACCESSORIES

BKKDR, BKKDR-RHP, BKKDR-WZB AL, BKRTV 100, BKDS 100

