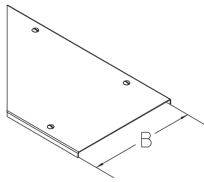


BKGLDR

Floor duct bend cover, mitre cut on left and turning bolts



The BKGLDR floor duct cover with a mitre cut on the left is placed on top of the BKGL floor duct branch and protects cables and supply lines from flying sparks and other mechanical effects. It is 100 to 600 mm wide corresponding to the branch. The floor duct cover is made of sendzimir hot-dip galvanised steel and is not embossed. With a maximum compartment size of 200 mm, we guarantee a tested load capacity of 5.00 kN according to EN 50085-2-2. They come with pre-assembled turning bolts.



steel, continously hot galvanized/Sendzimir process

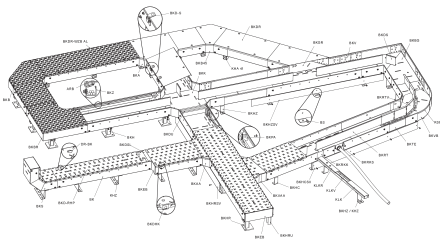
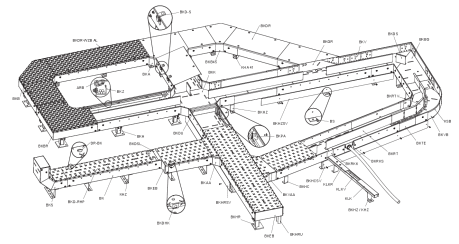
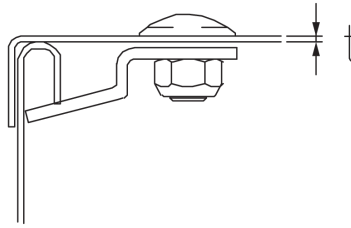
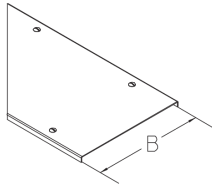
Products	B	t	P _{max}	weight
BKGLDR 10S	100 mm	2,00 mm	5,00 kN	0,634 kg
BKGLDR 15S	150 mm	2,00 mm	5,00 kN	0,930 kg
BKGLDR 20S	200 mm	2,00 mm	5,00 kN	1,263 kg
BKGLDR 30S	300 mm	2,00 mm	5,00 kN	2,040 kg
BKGLDR 40S	400 mm	2,00 mm	5,00 kN	2,990 kg
BKGLDR 50S	500 mm	2,00 mm	5,00 kN	4,090 kg
BKGLDR 60S	600 mm	2,00 mm	5,00 kN	5,350 kg

B: width
t: material thickness
P_{max}: maximum load

DETAIL AND APPLICATION IMAGES



PRODUCT INFORMATION



OPTIONAL ACCESSORIES

DR-BK, BKDU 100, BKDU 110

DIN

Load requirements according to, EN 50085-2-2

