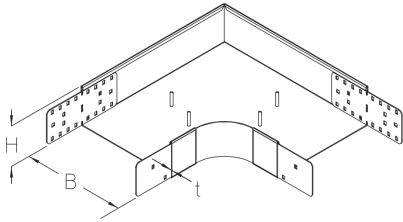


## BKBR 110

Floor duct bend with radius, height = 110 mm



The floor duct bend BKBR 110 with integrated connectors and a radius of 95 mm allows the direction of cable routing to be changed horizontally by 90°. It is 110 mm high and 100 to 600 mm wide. It is made of sendzimir hot-dip galvanized steel. To dissipate vertical live loads, one separating strip must be installed in the floor duct for widths  $\geq 300$  mm and two separating strips for widths  $\geq 500$  mm. The bend is pushed into the floor ducts and then bolted in place.

steel, continuously hot galvanized/Sendzimir process

| Products              | H      | B      | R     | t       |      |            | W         |
|-----------------------|--------|--------|-------|---------|------|------------|-----------|
| BKBR 110-10S          | 110 mm | 100 mm | 95 mm | 2,00 mm | 90 ° | HORIZONTAL | 3,870 kg  |
| incl.:                |        |        |       |         |      |            |           |
| 6 × KLR, 2 × BKV 110S |        |        |       |         |      |            |           |
| BKBR 110-15S          | 110 mm | 150 mm | 95 mm | 2,00 mm | 90 ° | HORIZONTAL | 4,520 kg  |
| incl.:                |        |        |       |         |      |            |           |
| 6 × KLR, 2 × BKV 110S |        |        |       |         |      |            |           |
| BKBR 110-20S          | 110 mm | 200 mm | 95 mm | 2,00 mm | 90 ° | HORIZONTAL | 5,250 kg  |
| incl.:                |        |        |       |         |      |            |           |
| 6 × KLR, 2 × BKV 110S |        |        |       |         |      |            |           |
| BKBR 110-30S          | 110 mm | 300 mm | 95 mm | 2,00 mm | 90 ° | HORIZONTAL | 6,940 kg  |
| incl.:                |        |        |       |         |      |            |           |
| 6 × KLR, 2 × BKV 110S |        |        |       |         |      |            |           |
| BKBR 110-40S          | 110 mm | 400 mm | 95 mm | 2,00 mm | 90 ° | HORIZONTAL | 8,960 kg  |
| incl.:                |        |        |       |         |      |            |           |
| 6 × KLR, 2 × BKV 110S |        |        |       |         |      |            |           |
| BKBR 110-50S          | 110 mm | 500 mm | 95 mm | 2,00 mm | 90 ° | HORIZONTAL | 11,280 kg |
| incl.:                |        |        |       |         |      |            |           |
| 6 × KLR, 2 × BKV 110S |        |        |       |         |      |            |           |
| BKBR 110-60S          | 110 mm | 600 mm | 95 mm | 2,00 mm | 90 ° | HORIZONTAL | 13,920 kg |
| incl.:                |        |        |       |         |      |            |           |
| 6 × KLR, 2 × BKV 110S |        |        |       |         |      |            |           |

Page 1

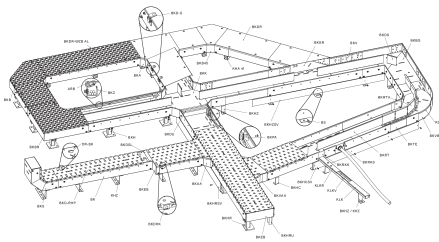
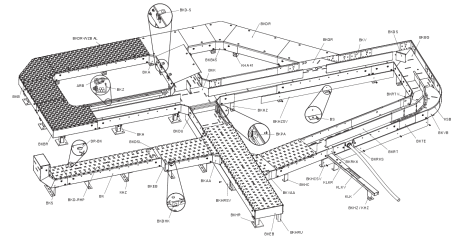
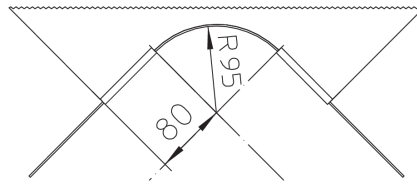
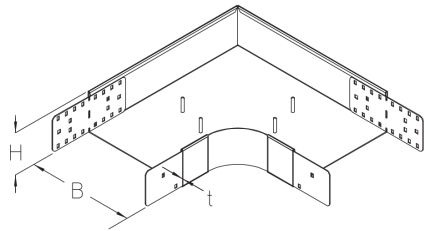


# PRODUCT INFORMATION

---

**H:** height  
**B:** width  
**R:** radius  
**t:** material thickness  
**W:** Weight per storage unit

## DETAIL AND APPLICATION IMAGES



## OPTIONAL ACCESSORIES

BKBRDR, BKBRDR-RHP, BKBRDR-WZB AL, BKRTV 110, BKDS 110

