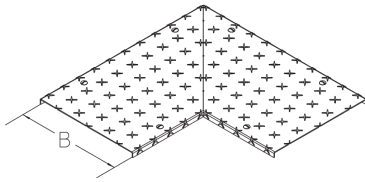


BKBGDR-RHP

Floor duct bend cover with mitre cut and anti-slip embossing



The BKBGDR-RHP floor duct bend cover with mitre cut is placed on top of the BKBG floor duct bend and protects cables and supply lines from flying sparks and other mechanical influences. It is 100 to 600 mm wide corresponding to the bend. The floor duct bend cover is made of sendzimir hot-dip galvanized steel with slip resistance class R12. With a maximum compartment size of 200 mm, we guarantee a tested load capacity of 5.00 kN according to EN 50085-2-2. They come with pre-assembled turning bolts.



steel, continously hot galvanized/Sendzimir process

| Products | B | t | P _{max} | | W |
|----------------------------------------|--------|---------|------------------|------------|-----------|
| BKBGDR-RHP 10S | 100 mm | 2,00 mm | 5,00 kN | HORIZONTAL | 1,260 kg |
| incl.: | | | | | |
| 1 × BKGRDR-RHP 10S, 1 × BKGLDR-RHP 10S | | | | | |
| BKBGDR-RHP 15S | 150 mm | 2,00 mm | 5,00 kN | HORIZONTAL | 1,860 kg |
| incl.: | | | | | |
| 1 × BKGRDR-RHP 15S, 1 × BKGLDR-RHP 15S | | | | | |
| BKBGDR-RHP 20S | 200 mm | 2,00 mm | 5,00 kN | HORIZONTAL | 2,523 kg |
| incl.: | | | | | |
| 1 × BKGRDR-RHP 20S, 1 × BKGLDR-RHP 20S | | | | | |
| BKBGDR-RHP 30S | 300 mm | 2,00 mm | 5,00 kN | HORIZONTAL | 4,080 kg |
| incl.: | | | | | |
| 1 × BKGRDR-RHP 30S, 1 × BKGLDR-RHP 30S | | | | | |
| BKBGDR-RHP 40S | 400 mm | 2,00 mm | 5,00 kN | HORIZONTAL | 5,980 kg |
| incl.: | | | | | |
| 1 × BKGLDR-RHP 40S, 1 × BKGRDR-RHP 40S | | | | | |
| BKBGDR-RHP 50S | 500 mm | 2,00 mm | 5,00 kN | HORIZONTAL | 8,180 kg |
| incl.: | | | | | |
| 1 × BKGRDR-RHP 50S, 1 × BKGLDR-RHP 50S | | | | | |
| BKBGDR-RHP 60S | 600 mm | 2,00 mm | 5,00 kN | HORIZONTAL | 10,700 kg |
| incl.: | | | | | |
| 1 × BKGRDR-RHP 60S, 1 × BKGLDR-RHP 60S | | | | | |

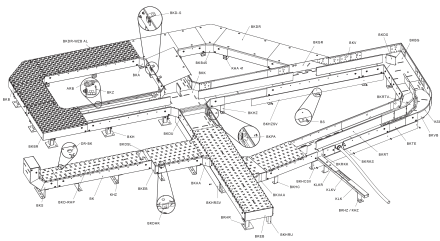
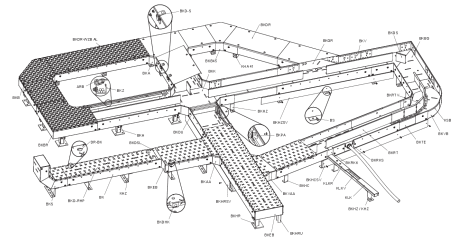
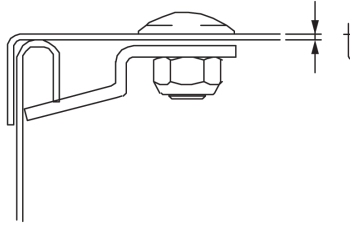
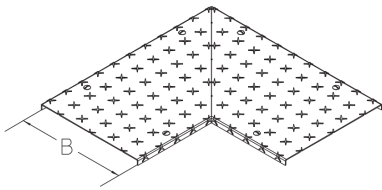
Page 1



PRODUCT INFORMATION

B: width
t: material thickness
P_{max}: maximum load
W: Weight per storage unit

DETAIL AND APPLICATION IMAGES



OPTIONAL ACCESSORIES

DR-BK, BKDU 100, BKDU 110

DIN

Load requirements according to, EN 50085-2-2

