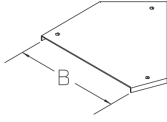


BKBDR45

Floor duct cover with turning bolts



The BKBDR45 floor duct bend cover is placed on top of the floor duct bend BKB45 and protects cables and supply lines from flying sparks and other mechanical influences. It is 100 to 600 mm wide corresponding to the bend. The floor duct bend cover is made of sendzimir hot-dip galvanised steel and is not embossed. With a maximum compartment size of 200 mm, we guarantee a tested load capacity of 5.00 kN according to EN 50085-2-2. They come with pre-assembled turning bolts.



steel, continously hot galvanized/Sendzimir process

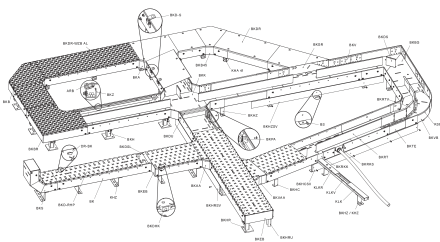
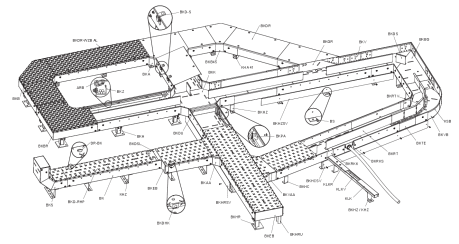
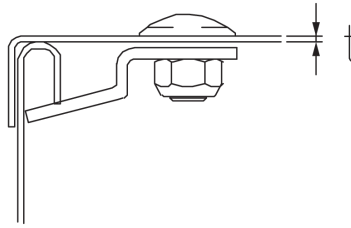
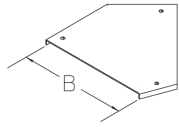
Products	B	t	P _{max}		weight
BKBDR45 10S	100 mm	2,00 mm	5,00 kN	HORIZONTAL	0,330 kg
BKBDR45 15S	150 mm	2,00 mm	5,00 kN	HORIZONTAL	0,490 kg
BKBDR45 20S	200 mm	2,00 mm	5,00 kN	HORIZONTAL	0,690 kg
BKBDR45 30S	300 mm	2,00 mm	5,00 kN	HORIZONTAL	1,180 kg
BKBDR45 40S	400 mm	2,00 mm	5,00 kN	HORIZONTAL	1,790 kg
BKBDR45 50S	500 mm	2,00 mm	5,00 kN	HORIZONTAL	2,540 kg
BKBDR45 60S	600 mm	2,00 mm	5,00 kN	HORIZONTAL	3,420 kg

B: width
t: material thickness
P_{max}: maximum load

DETAIL AND APPLICATION IMAGES



PRODUCT INFORMATION



OPTIONAL ACCESSORIES

DR-BK, BKDU 100, BKDU 110

DIN

Load requirements according to, EN 50085-2-2

