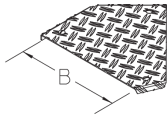


BKBDR45-WZB AL

Floor duct bend cover made of aluminium diamond plate



The BKBDR45-WZB AL floor duct bend cover is placed on top of the floor duct bend BKB45 and protects cables and supply lines from flying sparks and other mechanical influences. It is 100 to 600 mm wide corresponding to the bend. The floor duct bend cover is made of aluminium diamond plate with slip resistance class R10. With a maximum compartment size of 200 mm, we guarantee a tested load capacity of 3.00 kN according to EN 50085-2-2. They come with pre-assembled turning bolts.



aluminium

Products	B	t	P_{max}		W
BKBDR45-WZB 10AL	100 mm	2,50 mm	3,00 kN	HORIZONTAL	0,190 kg
BKBDR45-WZB 15AL	150 mm	2,50 mm	3,00 kN	HORIZONTAL	0,260 kg
BKBDR45-WZB 20AL	200 mm	2,50 mm	3,00 kN	HORIZONTAL	0,360 kg
BKBDR45-WZB 30AL	300 mm	2,50 mm	3,00 kN	HORIZONTAL	0,580 kg
BKBDR45-WZB 40AL	400 mm	2,50 mm	3,00 kN	HORIZONTAL	0,930 kg
BKBDR45-WZB 50AL	500 mm	2,50 mm	3,00 kN	HORIZONTAL	1,220 kg
BKBDR45-WZB 60AL	600 mm	2,50 mm	3,00 kN	HORIZONTAL	1,640 kg

B: width

t: material thickness

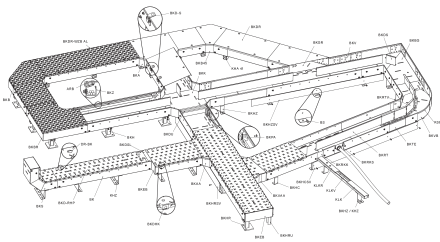
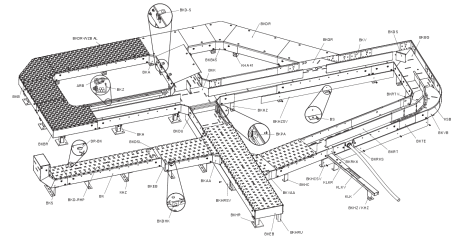
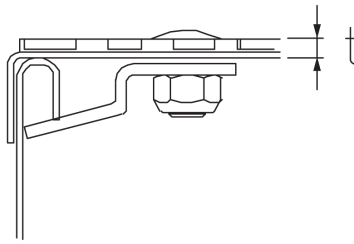
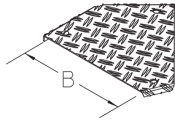
P_{max} : maximum load

W: Weight per storage unit

DETAIL AND APPLICATION IMAGES



PRODUCT INFORMATION



OPTIONAL ACCESSORIES

DR-BK, BKDU 100, BKDU 110

DIN

Load requirements according to, EN 50085-2-2

