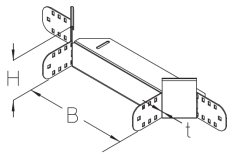


BKAA 110

Floor duct attachment branch, height = 110 mm



The BKAA 110 floor duct attachment branch with integrated connectors allows the direction of cable routing to be changed horizontally by 90°. It is 110 mm high and 100 to 600 mm wide. It is made of sendzimir hot-dip galvanized steel. To dissipate vertical live loads, one separating strip must be installed in the floor duct for widths ≥ 300 mm and two separating strips for widths ≥ 500 mm. The side rail of the main floor duct is cut out accordingly at the point where the connecting floor duct will branch off. The BKAA attachment branch is positioned and bolted in place at this point. The branching floor duct can then be pushed in.

steel, continuously hot galvanized/Sendzimir process

Products	H	B	t		weight
BKAA 110-10S	110 mm	100 mm	2,00 mm	90 °	1,348 kg
incl.:					
4 × KLR					
BKAA 110-15S	110 mm	150 mm	2,00 mm	90 °	1,488 kg
incl.:					
4 × KLR					
BKAA 110-20S	110 mm	200 mm	2,00 mm	90 °	1,568 kg
incl.:					
4 × KLR					
BKAA 110-30S	110 mm	300 mm	2,00 mm	90 °	1,788 kg
incl.:					
4 × KLR					
BKAA 110-40S	110 mm	400 mm	2,00 mm	90 °	1,998 kg
incl.:					
4 × KLR					
BKAA 110-50S	110 mm	500 mm	2,00 mm	90 °	2,218 kg
incl.:					
4 × KLR					
BKAA 110-60S	110 mm	600 mm	2,00 mm	90 °	2,438 kg
incl.:					
4 × KLR					

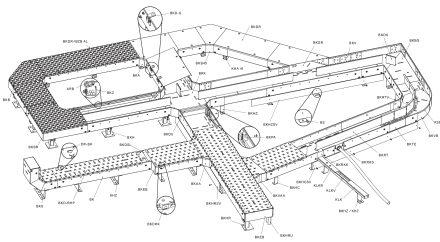
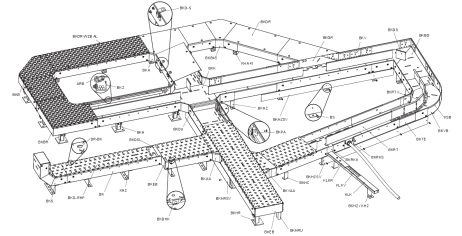
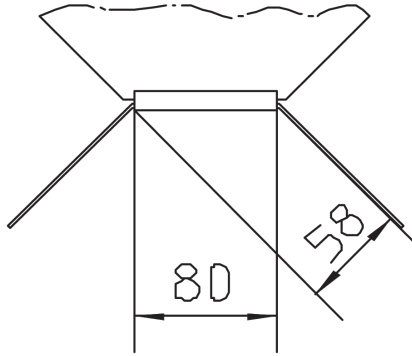
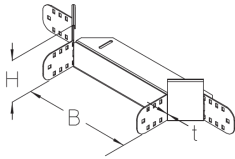
Page 1



PRODUCT INFORMATION

H: height
B: width
t: material thickness

DETAIL AND APPLICATION IMAGES



OPTIONAL ACCESSORIES

BKAADR, BKAADR-RHP, BKAADR-WZB AL, BKRTV 110, BKDS 110

