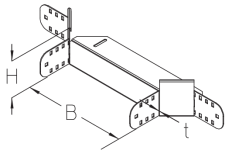


BKAA 100

Floor duct attachment branch, height = 100 mm



The BKAA 100 floor duct attachment branch with integrated connectors allows the direction of cable routing to be changed horizontally by 90°. It is 100 mm high and 100 to 600 mm wide. It is made of sendzimir hot-dip galvanized steel. To dissipate vertical live loads, one separating strip must be installed in the floor duct for widths ≥ 300 mm and two separating strips for widths ≥ 500 mm. The side rail of the main floor duct is cut out accordingly at the point where the connecting floor duct will branch off. The BKAA attachment branch is positioned and bolted in place at this point. The branching floor duct can then be pushed in.

steel, continuously hot galvanized/Sendzimir process

Products	H	B	t		weight
BKAA 100-10S	100 mm	100 mm	2,00 mm	90 °	1,316 kg
incl.:					
4 × KLR					
BKAA 100-15S	100 mm	150 mm	2,00 mm	90 °	1,456 kg
incl.:					
4 × KLR					
BKAA 100-20S	100 mm	200 mm	2,00 mm	90 °	1,536 kg
incl.:					
4 × KLR					
BKAA 100-30S	100 mm	300 mm	2,00 mm	90 °	1,756 kg
incl.:					
4 × KLR					
BKAA 100-40S	100 mm	400 mm	2,00 mm	90 °	1,966 kg
incl.:					
4 × KLR					
BKAA 100-50S	100 mm	500 mm	2,00 mm	90 °	2,186 kg
incl.:					
4 × KLR					
BKAA 100-60S	100 mm	600 mm	2,00 mm	90 °	2,406 kg
incl.:					
4 × KLR					

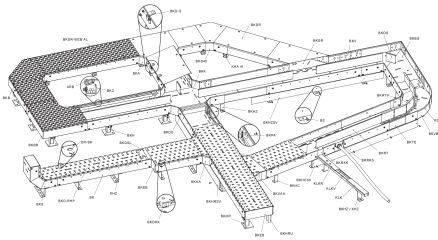
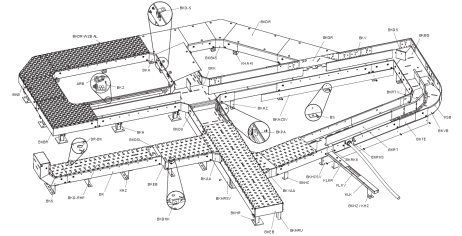
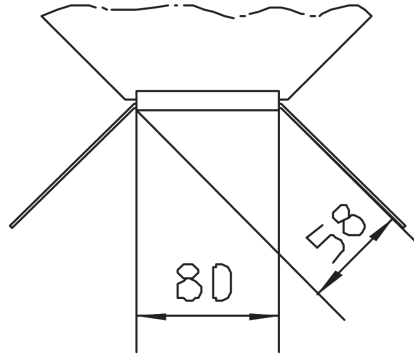
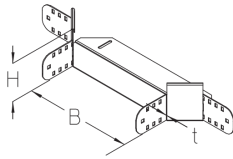
Page 1



PRODUCT INFORMATION

H: height
B: width
t: material thickness

DETAIL AND APPLICATION IMAGES



OPTIONAL ACCESSORIES

BKAADR, BKAADR-RHP, BKAADR-WZB AL, BKRTV 100, BKDS 100

