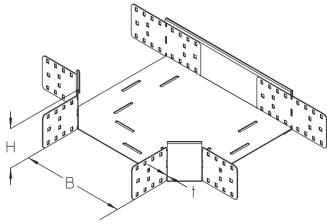


## BKA 110

Floor duct branch, height = 110 mm



The floor duct branch BKA 110 with integrated connectors allows the direction of cable routing to be changed horizontally by 90°. It is 110 mm high and 100 to 600 mm wide. It is made of sendzimir hot-dip galvanized steel. To dissipate vertical live loads, one separating strip must be installed in the floor duct for widths  $\geq 300$  mm and two separating strips for widths  $\geq 500$  mm. The branch is inserted between two floor ducts. The branching floor duct can then be pushed in.

steel, continuously hot galvanized/Sendzimir process

Products	H	B	t		weight
BKA 110-10S	110 mm	100 mm	2,00 mm	90 °	2,934 kg
incl.:					
6 × KLR					
BKA 110-15S	110 mm	150 mm	2,00 mm	90 °	3,384 kg
incl.:					
6 × KLR					
BKA 110-20S	110 mm	200 mm	2,00 mm	90 °	3,894 kg
incl.:					
6 × KLR					
BKA 110-30S	110 mm	300 mm	2,00 mm	90 °	5,144 kg
incl.:					
6 × KLR					
BKA 110-40S	110 mm	400 mm	2,00 mm	90 °	6,754 kg
incl.:					
6 × KLR					
BKA 110-50S	110 mm	500 mm	2,00 mm	90 °	8,624 kg
incl.:					
6 × KLR					
BKA 110-60S	110 mm	600 mm	2,00 mm	90 °	10,844 kg
incl.:					
6 × KLR					

Page 1

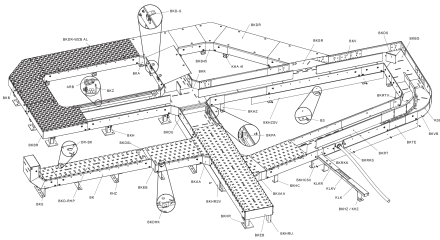
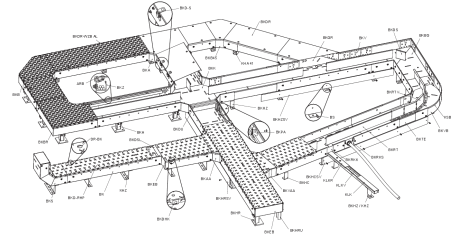
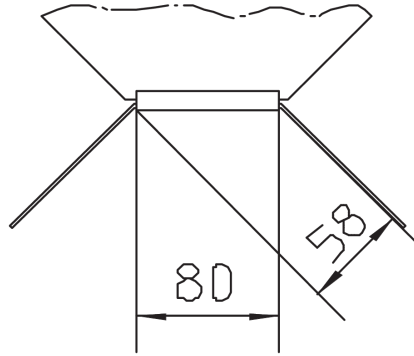
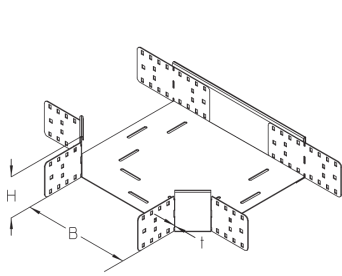


# PRODUCT INFORMATION

---

**H:** height  
**B:** width  
**t:** material thickness

## DETAIL AND APPLICATION IMAGES



## OPTIONAL ACCESSORIES

BKADR, BKADR-RHP, BKADR-WZB AL, BKRTV 110, BKDS 110

