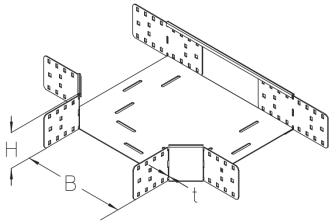


BKA 100

Floor duct branch, height = 100 mm



The floor duct branch BKA 100 with integrated connectors allows the direction of cable routing to be changed horizontally by 90°. It is 100 mm high and 100 to 600 mm wide. It is made of sendzimir hot-dip galvanized steel. To dissipate vertical live loads, one separating strip must be installed in the floor duct for widths ≥ 300 mm and two separating strips for widths ≥ 500 mm. The branch is inserted between two floor ducts. The branching floor duct can then be pushed in.

steel, continuously hot galvanized/Sendzimir process

Products	H	B	t		weight
BKA 100-10S	100 mm	100 mm	2,00 mm	90 °	2,924 kg
incl.:					
6 × KLR					
BKA 100-15S	100 mm	150 mm	2,00 mm	90 °	3,324 kg
incl.:					
6 × KLR					
BKA 100-20S	100 mm	200 mm	2,00 mm	90 °	3,824 kg
incl.:					
6 × KLR					
BKA 100-30S	100 mm	300 mm	2,00 mm	90 °	5,064 kg
incl.:					
6 × KLR					
BKA 100-40S	100 mm	400 mm	2,00 mm	90 °	6,654 kg
incl.:					
6 × KLR					
BKA 100-50S	100 mm	500 mm	2,00 mm	90 °	8,504 kg
incl.:					
6 × KLR					
BKA 100-60S	100 mm	600 mm	2,00 mm	90 °	10,714 kg
incl.:					
6 × KLR					

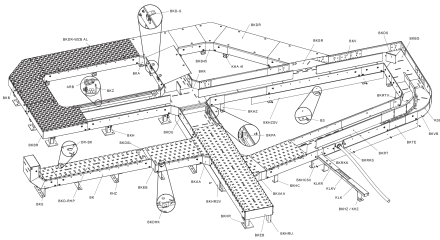
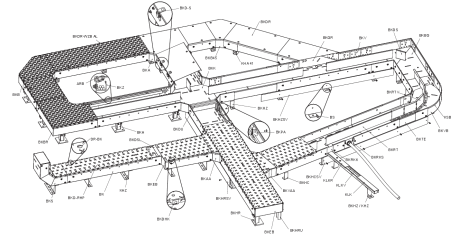
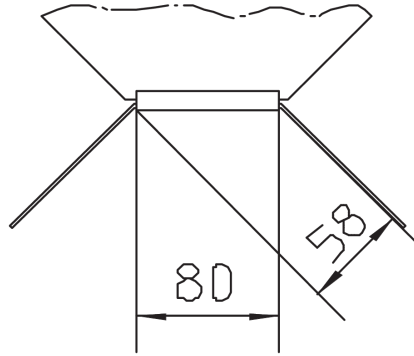
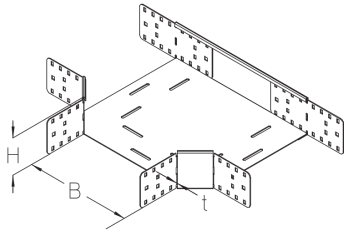
Page 1



PRODUCT INFORMATION

H: height
B: width
t: material thickness

DETAIL AND APPLICATION IMAGES



OPTIONAL ACCESSORIES

BKADR, BKADR-RHP, BKADR-WZB AL, BKRTV 100, BKDS 100

