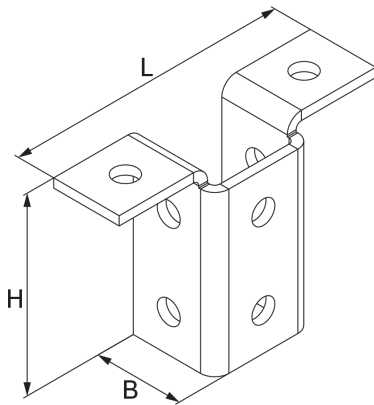


AVT

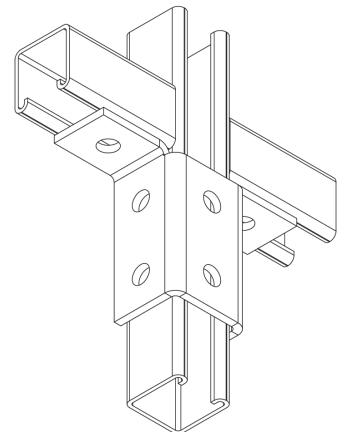
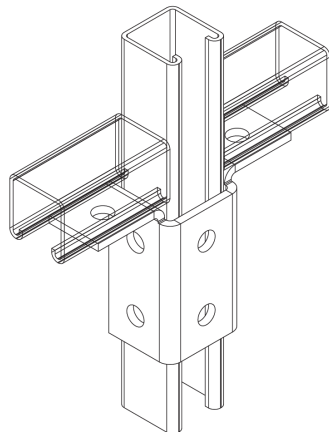
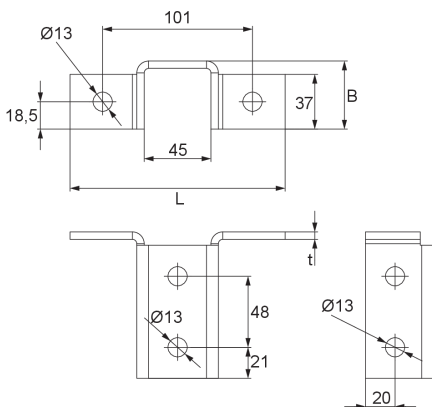


The channel joint connector AVT is used to connect three mounting channels (A 41, KHA 41, KHAL 41), one continuous channel and two in a T-joint. The two joints are aligned, orientated to the right and left of the continuous rail. It has $\varnothing 13$ mm fixing holes and is made of hot-dip galvanised steel. Fastening accessories must be ordered separately, depending on the application.

Products	L	B	H	t	W
AVT F	145 mm	46 mm	99 mm	5 mm	0,615 kg

L: length
B: width
H: height
t: material thickness
W: Weight per storage unit

DETAIL AND APPLICATION IMAGES



PRODUCT INFORMATION

