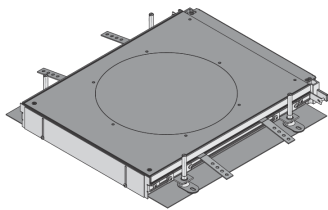


UEBSAM60 R

Add-on unit for screed-flush duct

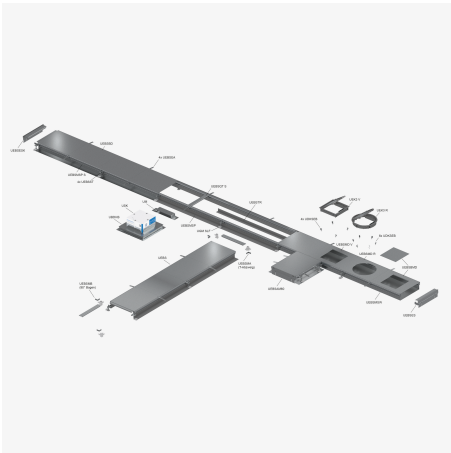
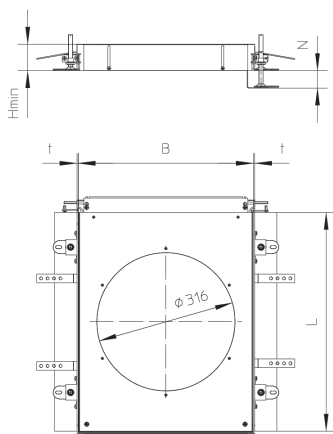


UEBSAM60 R is an attachment accessory for screed-covered duct systems. The items are made of sendzimir hot-dip galvanised sheet steel in accordance with DIN EN 10346 and are designed for typical office traffic loads. The sets are delivered pre-assembled on aluminium side profiles with bolted cross-beams, blanked assembly openings, corner pieces and various additional components. UEBSAM60 R add-on units have mounting openings with round cut-outs and are 400 mm wide, 50 mm long and are made of material 3 mm thick. The minimum installation height is 60 mm and the levelling range is 50 mm.



Artikel	Typ	H _{min}	N	t	E	W
UEBSAM60-307R 40S	Attachment assembly cover set,	60 mm	50 mm	3.00 mm	307 mm	9.013 kg

DETAIL- UND ANWENDUNGSBILDER



Load requirements according to: DIN EN 50085

