

UBDSLFM

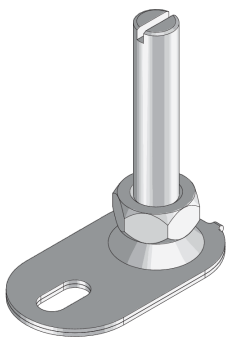
levelling support including nut

UBDSLFM products are levelling supports including nuts, that are used in floor boxes or cavity floor openings in conjunction with a levelling piece, but also in the screed-flush duct system UBSF. These installation components are suitable for high traffic loads and consist of a base plate and a levelling screw. Manufactured from sendzimir hot-dip galvanised sheet steel and complying with DIN EN 10346, the components are available in lengths from 60 mm to 220 mm. The component complies with DIN EN 50085 - the European standard for electrical installation duct systems, and is tested and certified by VDE.



Artikel	Typ	L	W
UBDSLFM 60	Levelling foot with nut	60 mm	0.064 kg
UBDSLFM 80	Levelling foot with nut	80 mm	0.067 kg
UBDSLFM 150	Levelling foot with two nuts	150 mm	0.096 kg
UBDSLFM 220	Levelling foot with two nuts	220 mm	0.122 kg

DETAIL- UND ANWENDUNGSBILDER



Load requirements according to: DIN EN 50085

